

Cabinet Member for Children and Family Services

Agenda

Date:	Monday, 17th December, 2012
Time:	9.30 am
Venue:	Committee Suite 1, Westfields, Middlewich Road, Sandbach CW11 1HZ

The agenda is divided into 2 parts. Part 1 is taken in the presence of the public and press. Part 2 items will be considered in the absence of the public and press for the reasons indicated on the agenda and at the foot of each report.

PART 1 – MATTERS TO BE CONSIDERED WITH THE PUBLIC AND PRESS PRESENT

1. **Apologies for Absence**

2. **Declarations of Interest**

To provide an opportunity for Members and Officers to declare any disclosable pecuniary and non-pecuniary interests in any item on the agenda.

3. **Public Speaking Time/Open Session**

In accordance with Procedure Rules Nos.11 and 35 a period of 10 minutes is allocated for members of the public to address the meeting on any matter relating to the work of the body in question. Individual members of the public may speak for up to 5 minutes but the Chairman or person presiding will decide how the period of time allocated for public speaking will be apportioned where there are a number of speakers. Members of the public are not required to give notice to use this facility. However, as a matter of courtesy, a period of 24 hours' notice is encouraged.

Members of the public wishing to ask a question at the meeting should provide at least three clear working days' notice in writing and should include the question with that notice. This will enable an informed answer to be given.

Contact: Paul Mountford, Democratic Services Officer
Tel: 01270 686472
E-Mail: paul.mountford@cheshireeast.gov.uk

4. **Proposed Expansion of Wheelock Primary** (Pages 1 - 82)

To consider a report on the proposed expansion of Wheelock Primary School following further consideration of the information and comments received during the consultation period.

5. **Nantwich Conservation Area Character Appraisal** (Pages 83 - 110)

To consider proposals for the Nantwich Conservation Area.

THERE ARE NO PART 2 ITEMS

CHESHIRE EAST COUNCIL

Cabinet Member for Children and Family Services

Date of Meeting:	17 th December 2012
Report of:	Lorraine Butcher, Strategic Director Children, Families and Adults
Subject/Title:	Proposed Expansion of Wheelock Primary
Portfolio Holder:	Councillor Rachel Bailey

1.0 Report Summary

- 1.1 As the Strategic Commissioner of School Places, Cheshire East Council has a statutory duty to commission sufficient school places for children resident in its area.
- 1.2 Pupil forecasts indicate a shortfall in the number of primary school places due to changing populations and increasing demand in some areas of the Borough resulting in a forecast of only 8 spaces across all year groups and all primary schools by 2017. For the Sandbach area, forecasts indicate a shortfall of 144 places for the same period across the six Sandbach primary schools and 151 shortfall including the 2 primary schools in nearby Haslington.
- 1.3 In response to these pupil forecasts a review of provision has been undertaken. This has resulted in a proposal to increase the capacity at Wheelock Primary from 210 to 315 pupil places (from 1 form of entry to 1.5 forms of entry) to meet the increasing demand in this area and to ensure a level of operational surplus; which is a level of spare capacity intended to accommodate reasonable journey times to school, some degree of parental choice, and flexibility to allow for mid-year entrants.

	Unused (Surplus) Places (January 2012 School Census Forecasts)									
	13/14		14/15		15/16		16/17		17/18	
Sandbach (8 Schools inc Haslington)	31	2%	-28	-1%	-68	-4%	-119	-6%	-151	-8%
Sandbach (6 schools)	4	0%	-52	-4%	-79	-6%	-119	-9%	-144	-11%
All CE Primary Schools	1121	4%	752	3%	452	2%	208	1%	8	0%

- 1.4 Permission to consult on this proposal was granted at the Portfolio Holder meeting of 15 October 2012 and all feedback has been collated for consideration by the Portfolio Holder on 3 December in order that a decision can be taken on a request by officers for authorisation to publish a statutory notice to expand the school.

- 1.5 At the Portfolio Holder decision meeting of 3 December, it was resolved that the decision on the publication of statutory notices be deferred until 17 December to allow more time for consideration of the large number of responses that were received at the end of the consultation period and to allow more time to consider the rationale for the proposal and the objections received from nearby schools. The minutes of the meeting state *'that the Cabinet Member for Children and Family Services defers a decision on **Wheelock Primary School** for up to two weeks to enable further consideration to be given to additional information and comments received during the consultation period'*.

2.0 Recommendation

- 2.1 That the Cabinet Member for Children and Families Services authorise the publication of statutory notices detailing the Local Authority's proposed expansion of:

Wheelock Primary, from the 210 school places (1FE) to 315 school places (1.5FE) thus providing an additional 105 school places with effect from September 2013:

3.0 Reasons for Recommendations

- 3.1 In making this recommendation, full consideration has been given to the responses received from key stakeholders during the consultation period.
- 3.2 How statutory consultation is carried out is not prescribed in regulations and it is therefore for the Local Authority as the proposer to determine the nature of the consultation. The consultation period spanned 5 weeks. In order to facilitate feedback on the proposal, a formal consultation document was produced detailing the background and rationale for the proposed expansion and explaining the statutory consultation process. **(Appendix 1)** Information on how feedback could be provided was included, together with a feedback form, which was published online on the Council's website and was available in hard copy on request. **(Appendix 2)** Letters were emailed to all primary and secondary schools for distribution to parents and carers of children on roll at the schools. Emails were sent to all other consultees with links to the website where full details could be obtained. Contact details were provided to facilitate requests for more information or assistance with this process. Consultees include local parents and carers, representatives of nearby schools, Ward Members, the local MP, the Diocese, Parish Councils and Trade Unions. In accordance with its statutory duty under Section 176 of the Education Act 2002, the Local Authority has invited feedback on the proposed changes from pupils at Wheelock Primary School.
- 3.3 A list of all consultees is attached as **Appendix 3** together with the method of communication used.
- 3.4 Additionally, the Local Authority has held meetings during the formal consultation period with headteachers and governor representatives from the local schools. The purpose of these meetings was to provide information about the proposed expansions and to facilitate discussion and feedback. In addition

the Local Authority provided information on the pupil place planning process together with specific information regarding pupil forecasts and future housing developments relevant to the individual areas. The Local Authority notes taken at these meetings, which include comments and feedback received from attendees, are attached as **Appendix 4**)

- 3.5 A total of 265 responses have been received by the deadline of 23 November to the proposed expansion of Wheelock Primary and these are set out below.

4 **Proposed Expansion of Wheelock Primary School**

- 4.1 The Headteacher and Governors have been consulted and fully support the proposed expansion of the school to a 1.5 FE primary school to accommodate the growing population and increasing demand for school places.
- 4.2 Fiona Bruce, MP (Member of Parliament for the Congleton Constituency) has visited the school during the consultation period and has confirmed her support for the proposed expansion as set out in the public consultation document of September 2012.
- 4.3 A total of 271 responses have been received to the proposed expansion of Wheelock Primary by the deadline of 23 November and these are set out below. It should be noted that at the time that this report was published, 9 responses had been received and therefore, as stated in the original report, the additional responses have been included in this revised report.

Respondent	Number received	Support	Do Not Support	No View
Local MP	1	1	0	0
Local Councillor	1	0	0	1
Local residents/grandparents	6	0	4	2
Governors – Wheelock	5	5	0	0
Governors – Other schools	12	0	12	0
Member of School Staff - Wheelock	21	20	1	0
Member of School Staff – Other	19	0	19	0
Parents - Wheelock	32	19	12	1
Parents - Other	85	0	85	0
Pupils – Wheelock	84	72	2	10
Pupils - Other	3	0	2	1
Other	2	0	2	0
Total	271	117	139	15

- 4.4 Of the 271 responses received, a total of 132 respondents have indicated that they either support the proposal or have no view. This represents 48.7% of the total responses and includes 117 (43.2%) that have indicated support for the

expansion and 15 (5.5%) who have indicated that they have no view. Against the proposal 139 (51.3%) responses have been received.

- 45 Just under 15% of responses were received from school staff. This includes staff members who are also parents and staff members who are also governors. The majority of staff feedback was from Wheelock Primary at 52.5% and of these 95.2% indicated support for the proposal compared with 100% of the 19 staff in other schools not in support. Views expressed by those in support of the proposal suggest that this is a popular and successful school with growing demand that could be met by expansion.
- 4.6 Pupil participation in this consultation exercise represents nearly 1/3 of the total responses (at 32.1%) Of the 87 pupils that submitted feedback, 82.8% were in support and a further 12.6% have no view. Submissions were received from pupils attending Wheelock Primary and other schools in the area with the majority of responses (84/87) received from pupils attending Wheelock Primary.
- 4.7 117 responses were received from parents including those with children attending Wheelock Primary (which represents 11.8% of the total feedback) and parents of children in other primary schools representing 31.3% of the total feedback of 271 responses. 62.5% of Wheelock parents either supported the proposal or had no view. 100% of parents with children attending other schools that fed back their views on the proposal did not support the proposed expansion of Wheelock Primary with many commenting that investment into all schools in the area would be fairer; that this proposal could be detrimental to other primary schools; that Offley Primary should expand from 1.5 forms of entry to 2 forms of entry utilising existing accommodation; and raising questions about the introduction of another 1.5 form of entry primary and the implications that this has for class organisation. Those parents expressing support for the proposal commented that this community school should be capable of serving its local and growing community and therefore supporting local families.
- 4.8 In summary, comments received from respondents expressing support for the proposal or expressing no view included:
- Agreement that more places should be provided to ensure local families could access provision at their local school within this growing community and to ensure school places are provided within a reasonable distance;
 - Support for the expansion of an outstanding and popular school;
 - Addressing historical pattern of local children not being able to access places by developing provision for the community;
 - Enquiring as to whether 105 extra places is sufficient and asking if this should be a proposal for expansion by an additional 210 places to meet forecast demand by 2017 or is there sufficient demand to warrant a new school in the Ettiley Heath area and questioning the reduction in capacity at Sandbach Primary under Cheshire County Council;
- 4.9 Comments received from respondents objecting to the proposal included:

- Concerns that this proposal will impact on nearby schools if more places are provided at Wheelock;
- Suggestions that Offley Primary should be expanded to 2 forms of entry;
- Suggestions that this increasing demand should be addressed by expanding 3 to 4 schools in the area spreading additional places evenly;
- Rezoning of Ettiley Heath as a solution to the increased demand for places at Wheelock from within its catchment area;
- Comment that this proposal undermines the Local Authority proposed principal of schools being 1 or 2 forms of entry wherever possible – as detailed in the Draft School Organisation Framework;
- Questions about travel to school and current arrangements of transporting children from Ettiley Heath at a cost to the LA;
- Challenge that informal consultation should have been undertaken with schools in the area in the process of formulating options prior to formal statutory consultation.

4.10 Full details of the responses received during consultation are attached as **Appendix 5**

4.11 The rationale for the proposal is set out within the consultation document attached as Appendix 1 and this indicates a forecast shortfall by 2017 of 151 pupil places across all 8 schools i.e. including the two Haslington primary schools and 144 pupil places including only the 6 Sandbach schools. For admission to the reception classes in 2012, demand for places exceeded the number of reception class places and, in order to ensure that all children had a school place for September, admission over the published admission numbers was agreed to some schools. The latest catchment area data recorded on 21 November 2012 and therefore subject to further change (shown in the table below) indicates that the number of children resident within the Sandbach area for September 2013 admission will again exceed the 185 pupil places. Additional places are therefore needed in this area to ensure that the Local Authority can meet its statutory duty of ensuring sufficient school places for children resident in its area.

School Name	PAN	Numbers in Catchment Area			
	2013	2010	2011	2012	2013
Elworth Church of England Primary	40	36	37	39	31
Elworth Hall Primary	30	23	22	25	22
Offley Primary	45	37	39	52	51
Sandbach Community Primary	15	35	30	36	39
St John's C of E Primary School,	25	15	7	8	12
Wheelock Primary School	30	44	50	61	49
TOTAL	185	190	185	221	204

4.12 In order to determine where additional capacity should be provided the Local Authority has analysed data on each school in the area and taking into account the following:

- Level of local demand using catchment or area generally served by the school;
- Community's ability to sustain the school;
- Physical condition of the school premises;
- Nature of the site, accessibility to it and scope for expansion;
- Ability to deliver a full range of curriculum and social experiences;
- Latest Ofsted inspections (successful schools);
- Pattern of parental preference (popular schools).

4.13 Elworth CE has 280 places and is full. A review of capacity at Elworth CE is also underway due to increased demand anticipated due to new housing in the area for which contributions have been agreed with developers through the Section 106 agreement. Rezoning of the Elworth CE catchment area to Elworth Hall was determined for 2013 to prepare for potential new housing in this area arising from developer enquiries and planning applications with these developments giving a combined pupil yield of an additional 60 primary aged pupils. Elworth Hall has 210 places as a 1 form of entry primary school. Forecasts indicate that this school will have some unused capacity by 2017 with 33 spaces forecast across all year groups. This spare capacity has contributed to the analysis when arriving at the overall forecast shortfall of 151 places. The number of first preferences received as an indication of demand for places at this school has been below the published admission number of 30 places since 2009 and therefore parental choice for this school can be met by existing provision.

4.14 Information about possible new housing in the Sandbach area and the potential increase in demand for school places that this would produce was presented at the meetings with headteachers and governors. This information informs school place planning procedures, but due to the uncertainty over when a development will commence, this is reviewed alongside pupil forecasts to assess the impact and timescales involved. It is important to stress that this proposal for Wheelock Primary is made to address forecast basic need based on existing intakes and forecast demand and not to address the potential demand for new housing in the area.

Development	Size	Primary Pupils	Secondary Pupils	Status
Fodens	265	43	34	Planning Permission granted - Development onsite
Test Track	118	19	15	Planning Permission granted subject to section 106 agreement
Canal Fields	102	17	13	Planning Permission granted - Development onsite
Albion Inorganic Chemicals	375	61	49	Outline Planning Permission - Site incl in draft Development Strategy
Hassall Road	39	6	5	Outline Planning Permission granted

North of Congleton Road	160	26	21	Subject to current Planning Application
Land off J17	700	119	91	Site included within draft Development Strategy
Elworth Hall Farm	90	15	12	Subject to current Planning Application
Abbeyfields	280	45	36	Planning Application refused - Subject to resubmission & current appeal
Hind Heath	269	44	35	Planning Application refused
Total	2390	395	311	

- 4.15 The Draft School Organisation Framework has proposed that, wherever possible, schools should be either a 1 or 2 form of entry, providing single aged classes. It is acknowledged that this will not always be possible due to variation in demand for places, the community's ability to sustain the school and site suitability and the government presumption in favour of the expansion of popular and successful schools.
- 4.16 The Government is committed to a diverse school system characterised by improving standards and increased choice for parents and pupils. The Education White Paper outlined the expectation on local authorities to encourage good schools to expand and for the focus to be on supplying a sufficient number of good places rather than removing unused (surplus) capacity in undersubscribed schools. The Education Act 2011 introduced these requirements from February 2012.
- 4.17 Zoning arrangements are part of a school's admission arrangements and can be revised through statutory admissions consultation procedures. Whilst catchment areas are lawful practice, parents must not be required to apply for their catchment area school through the coordinated admissions process and places at the catchment area school cannot be guaranteed. Catchment areas therefore afford a level of priority within the admission arrangements for families resident in the area when applying for school places. Consequently, parental preference for any one school can result in the school serving a much wider area than its catchment area. Pupil distribution maps, which demonstrate where pupils are resident and which schools they attend, may be accessed and viewed on the website under **Appendix 6**.
- 4.18 Assisted Travel to Wheelock Primary for families resident in Ettiley Heath is funded on the basis of the hazardous nature of the route at a cost of £20,900 with 80 resident children eligible. The schools located nearby are Elworth CE and Wheelock (the catchment area school) and on the other side of the A533 (Middlewich Road) is Elworth Hall. Forecasts suggest that one of these schools will have 33 unused places by 2017 based on existing patterns of intake to the school with the other school being full. To accommodate children resident in the Ettiley Heath area of Sandbach at one or both of these schools, additional capacity would be needed.
- 4.19 The process of formulating options for consideration included consideration of the priorities listed above in paragraph 4.11. Due to the timescales involved, informal (non-statutory) consultation procedures were not implemented prior to

formal statutory consultation. Feedback on the proposal has nevertheless been facilitated during the formal consultation period and meetings arranged with groups of schools provided in depth discussion with attendees.

- 4.20 On 30 October at the start of the consultation process, a meeting was held attended by headteachers and governor representatives of the Sandbach primary schools to provide information about the proposed expansion of Wheelock Primary and the rationale for change including forecast demand and the process for change. The meeting was well attended. Attendees acknowledged the pressures for the area but expressed objection to the Wheelock proposal. Concern was expressed that informal consultation procedures had not been implemented allowing schools in the area the opportunity to be part of the process of identifying options for change and that the proposal for 105 places had the potential to impact on other Sandbach schools if additional capacity is in place for September 2013 as proposed. Additional comments were made regarding alternative solutions that attendees at the meeting considered more appropriate for the area. It was agreed at the meeting that a further meeting would be arranged during consultation to facilitate feedback on alternative solutions for the town. (**Appendix 4a**)
- 4.21 On 9 November a further meeting took place and this was well attended. (Notes of this meeting are attached as **Appendix 4b**) The issues raised at the meeting include procedure: which was questioned in relation to the undertaking of equality impact assessments, data, timing of proposals and the potential impact on other schools and consultation timescales, with recommendations in relation to the latter that the 5 weeks is insufficient. The Portfolio Holder is advised that an equality impact assessments (EIA) has been completed for the proposals for 2013 reorganisation. A review of the EIA has been implemented to take into account feedback received during the consultation period.
- 4.22 Regarding the data, schools have been assured that analysis of data is ongoing. It should also be noted that the consultation timescales are compliant with the Department for Education (DfE) recommendation of 4 weeks and that whilst the Local Authority will seek to consult informally in the future as proposed in the Draft School Organisation Framework, there is no statutory duty to do so. Attendees were advised that the proposal for Wheelock Primary is one solution to the forecast shortfall for this area, which is based on 2012 School Census data, and therefore further reorganisation may be necessary. Attendees were reassured that any future reorganisation would involve informal consultation with representatives of schools in the area to ensure that the Local Authority promotes effective working relationships with schools when discharging its statutory responsibility to provide sufficient school places for its residents.
- 4.23 A range of alternative solutions were presented at the meetings held on 30 October and 9 November for consideration and these are summarised here:
- A review of catchment areas for schools in the area
 - Possible increase in the published admission numbers for St John's CE Primary from 25 to 30 (additional 35 places across all year groups)

- Possible increase in the intake of The Dingle from 50 to 60 per year group (additional 70 places across all year groups)
- Possible expansion of Elworth CE from 40 to 45 requiring additional accommodation (additional 35 places across all year groups)
- Possible expansion of Offley Primary from 45 to 60 requiring additional accommodation (additional 105 places across all year groups)
- Space to expand Sandbach Primary if necessary

4.24 Concerns have been raised in the response that the outcome of the consultation process has been pre-determined, that feasibility work has been undertaken resulting in proposed drawings and that these have been shared with parents at the school, that a majority of headteachers of other primary schools in the area have not had the opportunity to discuss the impact on their own schools or to suggest alternative solutions. In addition, it is stated that the Local Authority refused to minute meetings held on 30 October and 9 November. Further concerns include consideration of the impact on local schools, the capital costs and the need to ensure future demand justifies this proposal. Housing has been raised suggesting that this must also feed into any proposals for future provision beyond 2014. These concerns are addressed below.

4.25 The Portfolio Holder is advised that consultation has been undertaken for a 5 weeks period and that officers have provided reassurance that no final decision has been taken on the proposal. Feasibility work has nevertheless been undertaken at a cost to the Local Authority prior to consultation. It should be noted that this is necessary to ensure that a proposal is deliverable if it is then determined post consultation. The Local Authority accepts the risk of abortive costs if expansion is not approved through this process. Meetings held with the schools in the area were arranged to ensure that nearby schools were involved in this process and that the purpose of the meetings was to raise awareness and provide information about the proposed expansion and facilitate discussion in order that feedback can be submitted during consultation. Any concerns raised were recorded for presentation to the Portfolio Holder at the meeting of 3 December and these are attached to this report as **Appendix 4**. Capital approval had been obtained for named schemes prior to statutory consultation. The Portfolio Holder is advised that internal procedures necessitate that funding is approved in principle in accordance with the Council's agreed procedures, but that a final decision to make a significant enlargement is subject to formal statutory consultation and a further 4 weeks representation period. The Local Authority has provided reassurance that there is ongoing analysis of future demand due to planned and proposed housing developments in the area and that demand from new developments is in addition and involves liaison with developers over financial contributions where existing capacity is insufficient. It is important to bear in mind that the expansion of Wheelock Primary is proposed to meet basic need requirements arising from an increasing demand for places from existing residents.

4.26 There is a suggestion in the objection from the Governing Body of Offley Primary School that surplus places in existing schools should accommodate the September intake for 2013 as a short term solution. The Portfolio Holder is

advised that for admission in September 2012, the Local Authority received 212 first preferences for the 185 reception class places provided in the 6 Sandbach town primary schools and 302 first preferences for the 275 places when including the 2 Haslington schools. To accommodate these additional children, 2 of the 6 schools agreed admissions above their Published Admission Numbers to ensure that children were accommodated in schools within a reasonable distance from their home address and taking into account parental preference. Temporary accommodation has been provided to facilitate this pending a review of capacity in the area. For admission in September 2013 there are already 253 on the system resident in the catchment areas for the 275 places in the 8 primary schools and this includes 204 in the catchment areas of the 6 Sandbach schools for which there are 185 places. Historically, this figure increases by the end of the admission process as it is based only on parents and carers who are in receipt of nursery vouchers and therefore does not include those who make alternative arrangements for their child.

- 4.27 Attendees at the meetings were reassured that the alternative solutions presented will be reported to the Portfolio Holder and can also form the basis of discussion regarding further reorganisation in this area. However, it was discussed that the alternative solutions, which comprised in total of a least an additional 245 places would need to be fully considered as this far exceeded the forecast shortfall in capacity at this time. Attendees acknowledged that not all proposed alternative solutions would be necessary to meet the shortfall but that these were considered as more affordable options and offering less short term impact on nearby schools. The Portfolio Holder is advised that a desktop feasibility exercise has been undertaken on these alternative solutions and this information can be presented at the meeting on 17 December.

5.0 Wards Affected

Wheelock Primary School is situated in Sandbach Ettiley Heath and Wheelock Ward. However consultation was undertaken with neighbouring wards:-

Brereton Rural
Sandbach Elworth
Sandbach Town
Sandbach Ettiley Heath and Wheelock
Sandbach Heath and East
Haslington

6.0 Local Ward Members

John Wray – Brereton Rural
Gill Merry – Sandbach Elworth
Barry Moran – Sandbach Town
Gail Wait – Sandbach Ettiley Heath & East
Sam Corcoran – Sandbach Heath & East
David Marren – Haslington
John Hammond – Haslington.

7.0 Financial Implications (Authorised by the Director of Finance and Business Services)

- 7.1 The proposed expansion is part of an approved block budget (grant) set aside for Basic Need. The block budget was formally approved at Council on 23 February 2012.
- 7.2 The building work would be funded from the Council's 2012/2013 Capital Programme for Basic Needs. The capital investments required are estimated at £1,608,758.

8.0 Legal Implications (Authorised by the Borough Solicitor)

- 8.1 As the additional accommodation proposed for Wheelock Primary would increase the capacity of the school by more than 30 pupils and by more than 25% the proposed enlargement is subject to statutory proposals.
- 8.2 In bringing forward proposals to expand a school, the Local Authority must comply with statutory requirements as set out in The Education and Inspections Act 2006 (EIA 2006) and The School Organisation (Prescribed Alterations to Maintained Schools)(England) Regulations 2007 (as amended by The School Organisation and Governance (Amendment)(England) Regulations 2007 which came into force on 21 January 2008 and The School Organisation and Governance (Amendment)(England) Regulations 2009 which came into force on 1 September 2009).
- 8.3 The 5 statutory stages to a statutory proposal to expand a school are:-
1. Consultation
 2. Publication
 3. Representation
 4. Decision
 5. Implementation.

Proposed timescales for the statutory process are:

15 October 2012	Portfolio Holder's Decision to formally consult on expansion
22 October 2012	5 day call in period
22 October 2012 to 23 November 2012	Consultation Period
17 December 2012	Portfolio Holder's Decision on publishing proposals in a statutory notice.
24 December 2012	5 day call in period
7 January 2013 to 3 February 2013	Proposed Representation Period (4 weeks statutory)
TBC	School Organisation Sub Committee
TBC	5 day call in period
TBC	Implementation
September 2013	Proposed Implementation Date

- 8.4 In deciding whether or not to give permission to publish proposals it is a requirement both under guidance and case law that the decision maker should consider the views expressed during the consultation and take into account the Equality Impact Assessment. It is therefore imperative that full details of all views received during the consultation period are available at the meeting on 17 December 2012. In taking the decision the Portfolio Holder should also be satisfied that the Equality Impact Assessment has adequately taken account of any further submissions or views submitted during the consultation period. (EIA is attached as **Appendix 7** to this report).
- 8.5 If the decision is taken to publish proposals, a representation period will follow which must be of 4 weeks duration and cannot be altered. This allows comments on the proposals to be made by any person, which can be objections as well as expressions of support for the proposals. This period is the final opportunity for people and organisations to express their views about the proposals and ensure that they will be taken into account when the decision is finally being made.
- 8.6 Where capital funding is required for a proposal, guidance states that the decision maker must be satisfied that that funding is available before any proposals are published.
- 8.7 Following publication of the proposals and the subsequent statutory representation period, the final decision on whether the published proposals will be implemented will normally be taken by Cabinet. In making its decision, Cabinet will have to be satisfied that all statutory requirements including statutory consultation and statutory guidance have been complied with. The legislation provides further detailed statutory advice on what factors the decision maker must take into account in reaching a final decision, which information will be contained in the final report to Cabinet.
- 8.8 In the event that the Council receives objections to any of the statutory proposals, the final decision on those particular proposals will be determined by the School Organisation Sub Committee. If there are no objections to statutory proposals, those proposals will be determined by Cabinet.

9.0 Risk Management

- 9.1 Disruption to pupils, staff and the community must be kept a minimum during the reorganisation period and any subsequent building programme. This is to ensure that standards continue to improve.
- 9.2 The proposed expansion was identified to address a basic need in Sandbach. This is in order to ensure that the Authority meets its statutory duty to provide sufficient school places in this area. In order to complete these schemes by September 2013 the construction phase would need to commence by late February 2013. There is therefore a key risk resulting from the very tight timetable leading up to this.

- 9.3 Implementation of this proposal will be subject to the necessary planning permissions.

10.0 Access to Information

The background papers relating to this report can be inspected by contacting the report writer:

Name: Barbara Dale

Designation: School Admissions and Organisation Manager

Tel No: 01270 686392

Email: Barbara.Dale@cheshireeast.gov.uk

This page is intentionally left blank



**PROPOSAL FOR THE ENLARGEMENT
OF
WHEELLOCK PRIMARY SCHOOL,**

PUBLIC CONSULTATION DOCUMENT

**Lorraine Butcher
Strategic Director
Children, Families & Adults
Cheshire East Council
Westfields, Sandbach
Cheshire
CW11 1HZ**

September 2012

OBJECTIVE OF THIS CONSULTATION DOCUMENT

To undertake formal consultations with parents and carers of pupils at Wheelock Primary School and other interested parties before a final decision is taken regarding a proposal to expand Wheelock Primary School.

The Local Authority's proposal is to expand Wheelock Primary School, Sandbach from 210 to 315 pupil places for completion in September 2013.

INTRODUCTION

Wheelock Primary School is a popular and successful school with a published admission number (PAN) of 30 pupil places and overall accommodation for 210 pupils across the 7 year groups.

The Local Authority is proposing an increase in the school's current capacity of 210 pupils to provide 315 pupil places with a proposed implementation date of September 2013. This increase, if approved, will provide sufficient accommodation for an intake at the normal point of entry to the school (the reception class) of 45 pupils with the school operating in the longer term as a 1.5 form of entry primary school.

For 2012 admissions, the Local Authority and the school agreed the admission of 45 children to accommodate local children due to an increase in demand for school places in the Sandbach area. The general shortage of places in the Sandbach area for 2012 would have resulted in parents of some children being offered schools over 4 miles away, as the next nearest schools with places available.

The number of children in the school's catchment area has increased steadily over recent years and for 2012 admissions there were 61 children resident in the area.

Reception Year of Intake	Number of Children Resident in the School's Catchment Area
2010	44
2011	50
2012	61

As a popular school, the number of first preferences has consistently exceeded the 30 places available. For admission in 2012 the school received 44 first preferences.

Reception Year of Intake	Number of First Preferences
2010	38
2011	39
2012	44

The Headteacher and Governors have been consulted and fully support the proposed expansion of the school to accommodate the growing population and increasing demand for school places.

BACKGROUND

The Congleton Local Area Partnership (LAP) is the largest LAP in Cheshire East covering the areas of Alsager, Congleton, Holmes Chapel, Middlewich and Sandbach. Overall the LAP consists of 32 primary schools and 7 secondary schools and the total primary school capacity across the LAP is 7191

Wheelock Primary is situated in the Sandbach area of this Local Area Partnership which has 8 primary schools and 2 secondary schools. Two of these primary schools fall within the Crewe Local Area Partnership and serve the Haslington area (Haslington Primary and The Dingle Primary schools). The total capacity across the 8 primary schools is currently 1915 pupil places. Forecasts indicate that there will be a shortfall of 151 pupil places by 2017, taking into account all 8 primary schools.

Sandbach Area	Number on Roll (NOR) Jan 12	Capacity -Number of Pupil Places	Academic Year					
			12/13	13/14	14/15	15/16	16/17	17/18
Forecast NOR	1778	1915	1826	1884	1943	1983	2034	2066
Forecast Spare Places			89	31	-28	-68	-119	-151
Forecast % Spare places			5%	2%	-1%	-4%	-6%	-8%

SANDBACH TOWN PRIMARY SCHOOLS

The 6 primary schools (listed below) located in Sandbach town, and excluding the two Haslington primary schools, have a combined capacity of 1295 school places.

School	Status
Elworth CE Primary	Voluntary Controlled
Elworth Hall Primary	Community School
Offley Primary	Community School
Sandbach Community Primary	Community School
St John's C of E Primary	Voluntary Aided
Wheelock Primary	Community School

At primary phase, pupils that are admitted to these 6 Sandbach schools are predominantly resident within the school's 'catchment area' or live within the Congleton Local Area Partnership (LAP) with only 3.9% living outside the LAP and 0.3% living outside Cheshire East Borough.

Pupil forecasts for Sandbach town area indicate that overall there will be a significant shortfall of places across the 6 schools by 2017 with an overall shortfall by 11% (144 pupil places). The number of spare pupil places is forecast to fall to 0% in September 2013. This absence of any operational surplus from this time; which is a level of spare capacity intended to accommodate reasonable journey times to school, some degree of parental choice, and flexibility to allow for mid-year entrants, will impact on local residents if additional accommodation is not provided for this area.

ADMISSIONS

For admission in September 2012, the Local Authority received 212 (applications for the 6 Sandbach town primary schools. This exceeded the 185 reception class places available in the area. To accommodate these additional children, 2 of the 6 schools agreed admissions above their Published Admission Numbers to ensure that children were accommodated in schools within a reasonable distance from their home address. For Wheelock Primary School this was necessary to offer places for children resident in the area served by the school as 'catchment area' applicants. Temporary accommodation has been agreed for this school as an interim measure pending a decision on this proposal for a long term solution.

Since 2009 the number of pupils resident within the school catchment area and the demand for places from local residents has been steadily rising and the current demand for places exceeds the number of available places. This steady rise is expected to continue in future years and it is therefore recommended that the local demand for places at this school justifies a permanent expansion to take the school up to 315 places with a PAN of 45 (1.5FE).

SITE AND BUILDINGS

Situated in the village of Wheelock on the outskirts of Sandbach Town the school was originally developed to accommodate 5 classrooms and later extended to a

one form entry primary school with 210 pupil places. However the site is sufficient to allow for expansion to accommodate a 4 class extension to provide a total of 315 pupil places and retaining adequate playground and playing field provision.

Expansion of the school will be subject to planning permission.

FINANCIAL ISSUES

The Wheelock proposal is part of an approved block budget (grant) set aside for Basic Need. The block budget was formally approved at Council on 23 February 2012.

The building work would be funded from the Council's 2012/2013 Capital Programme for Basic Needs. The capital investment required is estimated at £1,765,758 which also includes the initial provision of the temporary mobile on site.

TIMESCALES

It is proposed that the programme for the implementation of any change would be:

22 October 2012 to 23 November 2012	Formal Public Consultations
3 December 2013	Meeting of the Council's Portfolio Holder for Permission to Publish Notices.
10 December 2012 to 7 January 2013	4 Weeks Representation Period
4 February 2013	Cabinet Decision
11 February 2013	Implementation
September 2013	Date for Completion

HOW DO I COMMENT ON THE PROPOSALS

You can complete our electronic feedback form which can be accessed on the Council's website at www.cheshireeast.gov.uk. All views expressed during consultation will be presented to the Council's Portfolio Holder before a decision will be made on whether to progress to the next stage.

WHAT IS THE NEXT STAGE?

All responses to this consultation will be collated and presented to the Council's Portfolio Holder at the end of the consultation period requesting permission to

proceed to public notices. If permission is given, this will mean that a further representation period will commence for a fixed period of 4 weeks, in line with statutory requirements.

At the end of the representation period, a further report will be prepared and presented to the Council's Cabinet or, if objections are received, to the Council's School Organisation Sub Committee for a final decision on the proposal.

PLEASE NOTE:

Where individual queries are received, we will not answer you directly, but we will compile a detailed response to the consultation that will be published on our website with hard copies available on request..

For further information, contact School Organisation and Capital Strategy Team, Cheshire East Council, Delamere House, Delamere Street, Crewe CW1 2LL, e-mail: SOCS@cheshireeast.gov.uk Tel: 0300 123 5012.

Consultation Feedback Form

Appendix 2

Proposed Expansion of Wheelock Primary School, Crewe Road, Sandbach

You are invited to comment on Cheshire East Council's proposal to expand Wheelock Primary School from a 210 place, 1 form of entry primary school to a 315 place, 1.5 form of entry primary school for completion in 2013.

Before completing this form, please refer to the consultation document, which provides the rationale for this proposal.

Please tick the relevant boxes to indicate your views and any comments you may wish to make.

Do you support the proposal to expand Wheelock Primary School?	Please tick (✓)		
	Yes	No	No View

Comments (if any)

(Please continue overleaf, if required.)

Please tick the following box(s) to indicate any of the following that apply to you:

	Please Tick (✓)
Parent/Carer of Present Pupil(s)	
Governor	
Member of School Staff	
Pupil	
Other (please specify)	

Name:	Date:
Address:	Signed:

Please return this form to:

Cheshire East Council, School Organisation and Capital Strategy, Delamere House, Delamere Street, Crewe CW1 2LL **by the closing date of 23 November 2012.**

This page is intentionally left blank

Consultee	Organisation / School	CONSULTATION PERIOD	
		Method of Communication	Date
Council's Web Pages		Live Web Pages	22.10.2012
Parents/ Carers of Pupils	Wheelock Primary	E mail to school with letter attached for parents	23.10.2012
Pupils of Wheelock Primary School	Wheelock Primary	School Council	
Governing body - school which is the subject of proposal	Wheelock Primary	E mail to school with letter attached	23.10.2012
Headteacher & Staff - school which is the subject of proposal	Wheelock Primary	E mail	23.10.2012
Governing bodies, Head teachers , staff and parents at Neighbouring Primary Schools	Sandbach Community Primary	e mail	23.10.2012
	St John's CE Primary, Sandbach Heath		
	Offley Primary		
	Elworth CE Primary		
	Elworth Hall		
	Smallwood Primary		
	Brereton CE Primary		
	Warmingham		
	The Dingle Primary		
	Haslington Primary		
Governing Bodies, Headteacher and staff at Neighbouring High Schools	Sandbach School	e mail	23.10.2012
	Sandbach High School & Sixth Form College		
Diocesan Authorities	Catholic Diocese of Shrewsbury	e mail	22.10.2012
	Anglican Diocese of Chester	e mail	22.10.2012
MP(s) of the constituencies affected	Fiona Bruce (Congleton)	e mail	22.10.2012
Councillors - Ward Members	John Wray (Brereton Rural)	e mail	22.10.2012
	John Hammond (Haslington)		
	David Marren (Haslington)		
	Gill Merry (Sandbach Elworth)		
	Gail Wait (Sandbach Ettley Heath & Wheelock)		
	Sam Corcoran (Sandbach Heath & East)		
	Barry Moran (Sandbach Town)		
Local District / Parish where the subject school is located	Brereton Parish Council	e mail	22.10.2012
	Sandbach Town Council		
	Warmingham Parish Council		
	Haslington Parish Council		
UNIONS	NAHT Branch Secretary	e mail	30.10.2012
	GMB	e mail	30.10.2012
	UNISON	email	2.11.2012
	NUT	e mail	5.11.2012

This page is intentionally left blank

Notes / Feedback

Schools Partnership Meeting – Sandbach

Appendix 4a

Date: 30 October 2012

Present:

Schools Diana Morrison - Sandbach Community
 Lynn Treadway – Sandbach Community
 Eddie Lea – Elworth CE
 Danielle Doubleday – Offley
 Jenny Davies – Offley
 Margaret Blease- Bourne – Elworth Hall
 Rob Whittle - St John's
 Gavin Mendham – ECAPH Chair
 Ben Cox – The Dingle

LA Officers Rob Hyde
 Barbara Dale
 Ken White
 Val Simons

Introductions

Presentation and Questions:

Statutory process considered including timescales for proposed expansion of Pebble Brook.

Information re: forecasts for Sandbach shared and discussion about the need to continue to review provision and ensure future demand and respond to parental preferences.

DfE presumption in favour of expansion of popular and successful schools and risks in relation to potential increase in the number of 'independent' schools (Academies/Free Schools)

Discussed operational surplus – local level 4%, CE level 10%

BD presented data and illustrated immediate shortfalls for Sandbach

Temporary measures already taken to get local children into local schools.

Processes for considering options was explained,

Notes / Feedback

Rationale for the proposed expansion of Wheelock.- stressed that this was consultation and no decision made. Planning application process would also have to be undertaken.

Statutory process involved

Timetable for proposal

Forecasting methodology currently being reviewed Pre school (NEG) data needed earlier in the process, GP data may be option

Financial implications.

Draft Town strategy and future housing developments.

Confirmed any pupil yield is additional to the forecast shortfall that is already indicated.

Section 106 process

Feedback:

TLC took out lots of accommodation, schools argued at the time live births increasing and accommodation would be needed in the future.

Accuracy of forecasting data

Additional accommodation at one school could destabilise all the surrounding schools. Have to acknowledge that 4 additional classrooms at one school could provide means for families to move schools.

School Organisation framework mentions 1FE or 2 FE schools the optimum size for a school, yet this expansion goes against that from a class organisational point not ideal.

Pupils need to be “shared out”. Alternative solutions discussed

Around the table discussion about alternative solutions from each school.

Questioned that the combined increase in PANs proposed across all schools was more than the proposed expansion of Wheelock and would create more places than required into the area as a whole.

Review catchment areas

Notes / Feedback

Further meeting needed within the consultation period, to facilitate opportunity for schools to discuss with Governors, come back together and present alternative solutions for presentation to the Portfolio Holder at 3 December meeting .

Follow up meeting arranged for 9 November 2012 a.m. at Offley Primary

Although notes taken from this meeting those present were urged to visit the web site read the information and complete the consultation feedback form

This page is intentionally left blank

School Organisation Meeting – Notes of the Meeting**Date: 09 November 2012****Venue: Offley Primary School****Attendees:**

Julie Mills (JM)	Admissions & Appeals – Minute taker
Ken White (KW)	Capital Implementation Manager
Rob Hyde (RH)	Organisation and Capital Strategy Manager
Barbara Dale (BD)	Admissions & Appeals Manager
Karen Samples(KS)	Head Teacher, Elworth CE School
Jenny Davies (JD)	Head Teacher, Offley School
Ben Cox (BC)	Head Teacher, The Dingle School
Jo Dyson (JD)	Head Teacher, Wheelock School
Lynn Treadway (LT)	Head Teacher, Sandbach School
Di Morrison (DM)	Governor, Sandbach Primary School
Rob Whittle (RW)	Head Teacher, St John's CE Sandbach Heath
Chris Holmes (CH)	Chair of Governors, Elworth Hall
Margaret Blease- Bourne (MB)	Head Teacher, Elworth Hall school
Danielle Doubleday (DD)	Governor, Offley School
Edwin Leigh (EL)	Chair of Governors, Elworth CE Primary School
Nova Harvey (NH)	Bursar, Wheelock school
Steve Noble (SN)	Vice Chair or Governors, Wheelock School

Introductions.

RH – welcomed everyone to the meeting and outlined the format of the meeting confirming the aims which were to listen, collect, record, capture views from attendees in order to provide feedback to the Portfolio Holder.

There was acknowledgement by all present in respect of increased pressure on school places in the Sandbach area now and in the future and that future capital allocations were not known.

Question raised - Wheelock development, is this a done deal?

The LA responded advising that at this stage Cheshire East Council has recommended the enlargement of Wheelock; a statutory consultation process is to be followed, which includes a recommendation to the Portfolio holder. All feedback received will be presented to the Portfolio Holder. If determined a notice will be published allowing a further 4 weeks for representations. If objections are raised during representation, then a Council Committee will consider and make the decision.

It was clarified that the Local Authority had analysed a variety of data available to identify options. The priority was to ensure that there are sufficient places for

children in the area in the future. The process implemented did consider sustainability of schools in the area and was mindful of the presumption in favour of the expansion of popular and successful schools.

It was highlighted that there is a Statutory process that must be followed when proposing significant enlargements to a school.

Concerns were raised about previous years when places were removed by Cheshire County Council – this was driven by surplus places – information at that time indicated less children and the process to remove surplus places was driven by government to ensure an efficient use of resources by reducing unused places.

Looking ahead due to changing demographics/birth rates and increased housing it is likely that there will be further proposals/options in future years.

It was reported that current information available now shows that the birth rate has been increasing since 2001. Officers provided reassurance that there is ongoing analysis of data and forecasting methodology is currently under reviewed to measure its reliability and make changes as necessary.

The LA advised that for the September 2013 intake, November 2012 figures indicate that there will be an issue again this year as 65% of the data is recorded and this already indicates a shortage of school places across Cheshire East.

A question was asked as to whether the LA could guarantee a full intake for some schools. BD advised that there can be no assurances for a full intake for any school – this is determined by parental preference and availability of school places in preferred schools.

JD advised that the PAN was exceeded for local children for September 2012 and that, in her view, this was the best decision for children in the local area.

Based on available information forecasts for 2013 indicate only 31 spaces across all schools in Sandbach area in year groups Reception – Year 6.

There was a view that the statutory period is too long, a question was asked as to who sits on the School Organisation Sub Committee and how representations can be made.

Suggestions on how matters of this nature could be handled in a better way included:-

- Not comprising confidentiality by lateness, by being honest from the outset
- Earlier notice to schools – Heads and Deputy Heads
- More accurate data – schools have information on children in their nurseries and pre-schools – why doesn't the LA?
- Suitability / net capacities / undertake visits to schools
- Better feedback mechanism
- Up-to-date information on buildings, staffing and strategies
- Undertake EIA for each school
- Extend consultation period as it is not long enough

BD advised that EIAs have been produced for the proposals and that these are published on the Council's website. It was accepted that schools must be involved earlier in the process and apologies were reiterated. KW confirmed that LA has statutory duty to review net capacities in schools and this process is undertaken. BD confirmed that the consultation period recommended by the DfE is 4 weeks for an expansion and we have provided 5 weeks. Forecasting data is a recognised priority and process therefore involves it being reviewed to ensure it is 'fit for purpose'.

Reference was made to limited resources; there are cost implications when undertaking feasibility studies. LA recognises and accepts that abortive costs can be incurred.

Reference was made to the Role of Appeal Panels and school adjudicator and the potential for admission through this process if panels conclude that new accommodation is sufficient to remove prejudice. BD confirmed that accommodation is not in itself sufficient to remove prejudice and staffing, class organisation and budgets are critical factors when taking decisions on admission.

A question was raised as to why considering there were only 14 places short at Wheelock in 2012, were the LA proposing 105 places. BD confirmed that proposal was to meet future demand informed by School census data forecasts.

The role of Councillors was questioned, timings and the best people to be involved in future decisions.

It was noted that there increased housing will impact on provision at Elworth CE. It was confirmed that the process for funding such additional demand was met (at least in part) through Section 106 developer contributions.

Challenges were raised that the proposal was wrong for the area of Sandbach and that this had the potential to be detrimental to nearby schools in the earlier years following completion of the expansion, if it was approved. Alternative solutions were offered around the table.

Elworth Hall (MB)

- Issues re school building – difficult to expand
- Catchment – need to review (impacting on PAN)
- Process – requires local decision, allowing representation to cabinet.
- For future – strategic way,
- Equality Impact Assessments should be undertaken for all schools
- Set up Committee of Heads and Local Authority (eg FB/AG)
- Forecasts feed in local knowledge.
- Undertake desktop exercise – then go to schools
- School Development Plan - include schools

St John's CE, Sandbach (RW)

- Review catchment areas in Sandbach area
- 41 school places available currently
- September 13 ideal is to fill to PAN of 25, however could admit 30 if required,
- Concerns are if PAN not reached; cuts will be required
- Aim for 1FE

The Dingle, Haslington (BC)

- Alternative – short term could take 10 more pupils per year group
- Long term -Staffing and building issues (13 classrooms)

Elworth CE (KS)

- Catchment area review needed
- Need for transparency
- Feasibility
- School has capacity in Key Stage 2 only
- Increase to 45 PAN would require 1 additional classroom

Wheelock (JD)

- Issues with local families – school is not large enough to serve it's community at present
- Ettiley Heath area is in catchment currently, issues for school if this changed
- Sept 12 intake 44 in catchment, 3 out of area admitted following successful appeal

Offley (JD)

- School Organisation Plan indicates schools of 1FE / 2FE; this needs to be looked at
- More pupils admitted in reception for September 2012 (57)
- implications for building identified at the time
- Previous PAN was 60 PAN now 45
- Future increases dependant on CEC conducting building work on the site
- September 2013 – KS1 okay, issues are in KS2 due to lack of space
- Minimum 2 additional classrooms required to admit to 60 per year
- Issues re: staffing
- Could increase school to 2FE

Sandbach PS (LT)

- PAN 15 – working okay – organised into split year groups
- Huge site – space to expand if required

BD highlighted to the meeting that if catchment areas were to be reviewed, this would be a) the responsibility of the relevant admission authority and b) would require consultation with parents and key stakeholders. BD also explained that decisions on admission arrangements can be referred as objections to the Schools Adjudicator, who must ensure that admission arrangements are fair and reasonable and have regard to the presumption in favour of the expansion of

popular and successful schools. Historical arrangements/patterns of intakes can be taken into account in this process. The final decision may not rest with the admission authority.

BD advised that the Draft School Organisation Framework sets out the importance of effective working relationships with schools when planning school places

RH re-emphasised the need to complete and submit the feedback forms

It was reported that the Portfolio Holder was now Rachael Bailey and not Hilda Gadum

Actions:

BD - to confirm that consultation responses are also reported at the representation period.

BD – to share NEG/LAP analysis data with attendees re: Sandbach.

JD stated that admission over PAN in 2012 had been agreed with the LA on the understanding that accommodation would be available for future years. BD explained that the decision to admit further pupils was on the basis that the school could accommodate in existing accommodation.

BD check agreement re: Offley intake increase in September 2012

RH – to provide names of all School Organisation Sub Committee members and process.

This page is intentionally left blank

Count of Response	Response			
	No	No view	Yes	Grand Total
Total	139		15	117
				271

Connection	School	Response	Comments
Councillor	N/A	No view	The forecast NOR in the consultation document show a shortfall of 119 places in 2016/17 and 151 in 2017/18. Therefore increasing Wheelock by 105 places will not solve the problem of underprovision in Sandbach. Furthermore the figures do not properly take into account the new houses likely to be built on the outskirts of Sandbach over the next few years, so the underprovision is likely to be higher than the figures given in the consultation document. I would like to see more information on how the overall problem is being addressed rather than a piecemeal approach. My unanswered questions are;- would it be better to increase Wheelock by 210 places? As there is a CEC funded school bus from Ettiley heath to Wheelock costing £30,000 a year, would it be better to build a new school at Ettiley heath? Why was the adjacent Sandbach CP School cut from 210 to 150 a couple of years ago?(This suggests forecast figures prepared on the same basis and are they reliable?) Are half form sizes better than full form sizes? What size of school is best for a child's education and what size is most cost effective? Is a single class size the best and most cost effective?
Governing Body	Offley	No	See attached Letter for full details (Appendix 9a) i) the consultation process is fundamentally flawed; ii) the proposal is unnecessary in the short term, and iii) the proposal utilises a level of spend that is unjustifiable at this point in time. Paragraph 27 of Part 2 of Schedule 5 of TSOR requires that the local education authority must, before they publish any proposals, consult the governing body, teachers and other staff of any other school that may be affected by the proposals together with any other interested party and any other persons whom the authority thinks are appropriate. GBOPS believes that Cheshire East Council ("CEC") has paid lip service to the consultation process with views of other stakeholders not being sought until the process for the expansion is, to all extent and purposes, a 'done deal'. GBOPS understands that proposed drawings for the extension of Wheelock have been provided to parents of pupils at the school and parents have been led to believe that there is certainty that the proposal will go ahead. The Chair of Governors has confirmed that the plans are ready to be submitted. GBOPS considers that this is inappropriate at this stage of the consultation process. Other inconsistencies have been identified in information provided to the Wheelock School Chair of Governors and Headteachers of other Sandbach primary schools.
Governor	Elworth CE	No	After much discussion and reflection, the governing body of Elworth CE Primary School do feel a level of concern over the timing of the consultation process regarding the proposed expansion of Wheelock Primary School and wish to make the following comments: 1. Whilst there are suggestions that there is a shortfall of 14 places within Wheelock Primary School, why are there proposals for 115 to be created - a 50% increase of numbers on roll? There appears to have been little, if any, consideration of capacity currently within schools in the area which could have created additional places without any or little cost, and we would like assurances that there will be NO short-term impact on the number of children joining our school in September and the potential for losing siblings. 2. It was evident that parental preference was a factor for determining the build at Wheelock. Historical data for our school would replicate this picture, with 60 people choosing our school for their 1 st preference and over 130 preferences in total. We have consistently been oversubscribed and with the future planned housing developments, additional places will have to be created over the next 5 years. The local authority carried out a feasibility study to expand Elworth CE Primary School in relation to these planned developments, and we are concerned that dev
Governor	Wheelock	Yes	No comment
Governor	Wheelock	Yes	I support the proposed expansion as it is important that children within the Wheelock Primary School catchment area have the opportunity to attend their local school.

Governor	Sandbach PS	No	When school admission numbers were altered during the recent TLC process, there was extensive consultation about the proposed changes, not only with the schools concerned but also with the local community. It is therefore very disturbing that the decision to make very significant changes to the admission numbers for Wheelock Primary School appears to have been made without any information being provided or consultation being carried out across the schools and local community. It is also disturbing that no other alternatives for increasing the number of primary school places available in Sandbach appear to have been considered. For example, in the recent TLC process the admission numbers for Sandbach Community Primary School were reduced to a half form entry. Presumably it would be possible to increase the numbers there to a full form entry. Similarly Offley Primary School has had significant changes to its admission numbers and it should be feasible to increase the admission numbers there to two form entry. Either of these alternatives would have the advantage of maximising the numbers of schools in Sandbach with whole form entry numbers, and there are other possible options involving the other primary schools in Sandbach. The proposal to increase admission numbers at Wheelock Primary School will res
Governor	Sandbach Primary	No	The proposal makes inadequate reference to the geographical spread of proposed housing development in the area. This will mean that there is a requirement for expansion across many locations and the proposal on the table is at one of the smallest available sites within the area, meaning that there will be additonal expense elsewhere - this could be reduced with forward planning. The proposal runs contrary to the stated objectives in the School Organisation Plan of seeking one/two form PAN (this proposal is for 1.5 PAN). The impact on other local schools has not been explored adequately in the EIA statement prepared. There will be an immediate and negaitve impact on other Primary schools within the area as whole families move their children to the created vacant spaces in other year groups at Wheelock
Governor & Staff member	Wheelock	Yes	I support the proposal to extend this outstanding and popular school because it will allow local children, who are in the present catchement area, to attend their local school.
Governor	Offley	No	I don't support this proposed as it does not take into account alternative options for investment to take on more pupils across all Sandbach Schools only 1 area.
Grandparent	Wheelock	No view	I wish to comment on the consultation for the extension and enlargement of Wheelock Primary school where our grand daughter is currently in year 1. We are happy with her school life at Wheelock where we think she has a a great environment for her early years and where she is happy. Her mum ,also concurs with our comments. Our input into the consultation would be as follows:- 1. The whole ethos of the school is the small thriving community whihc is almost like a large family. while we fully appreciate the need for increased capacity, and support that aim if that is percived to be the best way forward by the Governors of the school- we trust that the possibleimpact upon this psecial quality of atmosphere and intimacy will be throughly considered as part of the plan. 2. We note that the size of the site is said to be sufficiently large accommodate the increase in accomodation of 50%. While we can see there is space around the school it is stillsmall sapce, relatively speaking, and so we hope that due consideration has been given to this aspect and that the day to day practicalities of accommodating 315 pupils in due course will have been thought through in a thorough manner. 3. Parking for parents etc around the school is obviously very tight and restricted and no doudt there will be have been a full and proper consult

Member of School Staff	Sandbach Community Primary	No	(Appendix 9c Summary) I fully understand the lack of school places across Sandbach and the predictions being made due to the actual and likely future housing developments in the area. However, I do not see the current proposal to increase Wheelock as the long term solution to getting education provision right to meet need and parental choice in the area. I would also add that EIA is not accurate as:- -The current proposal is not benefitting all young people and their parents and carers in the Sandbach area -Key identified stakeholders have not been sufficiently consulted early enough for their input to be fully taken into account -The proposal will not positively impact on the number of school places for primary age children as the increase will have a negative impact on children in other schools if their numbers on roll drop significantly over the next few years due to this proposal -No risk assessments have been carried out on the impact of the proposals on other individual local schools -The proposal will not necessarily have a marginally positive impact on young people and parents with a disability because the provision of additional places will overall provide sufficient places closer to a person's place of residence as some of the catchment for Wheelock is actually closer to another school -Pupils from socio-econom
Member of School Staff	St John's	No	full details attached as Appendix 9B. Opposed on grounds of - flawed consultation process , in year movement, reception places 2013, current capacity at St John's, Current reasons why parents choose not to come to St John's, the potential short impact of expanding Wheelock, in year movement and the process has not been thought out.
Local resident	N/A	No	Places should be provide across exisiting primary school within Sandbach and all eligible schools bid to be allocated funding. Providing 1.7million to just one school one group of pupils is grossley unfair and puts other schools at a disadvantage in the future.
Local resident	N/A	No	Why oh why can the council not come up with a long term solution to those problems instead of quick fix solutions all the time!
Local resident	N/A	No	1. We note in the proposal assessment that key stakeholders are considered to be staff and children/parents. No mention is made of the school's immediate neighbours like ourselves, who should also be identified as key stakeholders. 2. We find it difficult to understand the basic premise of an insufficient supply of primary school places in the next few years, as a couple of years ago an anticipated over-supply was cited for the proposal to close at least one Sandbach Primary School (Sandbach Community Primary on Crewe Road), a decision partly rescinded due to local community pressure, with a reduction in intake by 50% we believe being the outcome. Since this school is within walking distance of Wheelock Primary School, a viable alternative would be to reverse the reduction in numbers at that school (if the under-supply is real). 3. The traffic situation along our part of Crewe Road is very congested because of parking to drop off pupils (in the morning) and to pick up (in the afternoon) exacerbated by unreasonable parking behaviour by some. This suggests that the school 'local' intake (ie walking distance) is fully covered, with the
Local Resident	N/A	No	Expansion will cause loss of pupils for smaller schools such as St Johns. Whilst it is important for one school to succeed this should not be at the cost of other schools. I thought Cheshire East were making cut back how can this be viable.
Local Resident	N/A	No view	This plan shows no consideration for other schools in the area, what will they do when their numbers decrease, close possibly. Consultation process has been flawed throughout.
Member of School Staff	Sandbach PS	No	Cannot see the justification for spending already limited funds on creating extra unecessary places for pupils for pupils - when children with additional needs are already suffering from lack of resources.
Member of School Staff	Sandbach Primary	No	Current proposals are for a number of new housing developments to be built within Sandbach. It would be less costly and disruptive in the long term if one of the Sandbach schools were to be expanded, such as Offley Road, or St John's.
Member of School Staff	Wheelock	Yes	To continue to provide an environment for excellent teaching and learning for the growing community
Member of School Staff	Wheelock	Yesat Wheelock Primary. I have seen the school grow and flourish over the last five years, culminating in us achieving outstanding status at our recent Ofsted inspection. We have for many years struggled to find places within our school for our local children. Currently we are oversubscribed in most year groups. Being a popular local school we are often the first choice for many of our local families and find it difficult when paretns are upset because we have no places for their children in their local school. It is therefore with much excitment that I support the expansion of our school to enable our local community access to an outstadning education. This is in line with the current Government agenda for popular and successful schools to expand taking into account parental preference and local children having access to an education in their local school
Member of School Staff	Wheelock	Yes	Wheelock Primary school is a great school, to experience on my teacher trainig. I believe that the school and the children in and around the school would beenefit greatly from an expansion.

Member of School Staff	The Dingle	No	I understand the need for additional places at Wheelock Primary and within Sandbach and Haslington EIP locality as currently there are an abundance of children within Wheelock's catchment. However my concerns are as follows: The Process leading to the decision. I do not understand why it was allowed that such a decision would be made without first consulting with local EIP headteachers who have been encouraged to work together by the Authority who built really strong relationships, and have first hand knowledge of what is happening in their schools. The Cheshire East Consultation on School Places suggests the Authority wants 1 FE or 2FE schools. Wheelock is currently the only school in Sandbach and Haslington where this is the case. The propoasal will do the exact opposite and leave the school very vulnerable to cohorts of difficult to manage sizes as children move into Wheelock's KS1 and KS2 classes. This may particularly be difficult to manage in KS1 with the infant class size rule. For example if Year 1 and 2 are already at 30 - what if 2 sibblings in other schools decide to move in or someone from out of the area decides they want a space at the Outstanding School. How will the school manage difficult numbers. this could have a considerable impact on the budget and the organisation of classes and teach
Member of School Staff	Sandbach Primary	No	After taking into consideration this proposal, I would like to express my concerns. I believe that the process had many floors, the first of which was to secure the commitment of all Stakeholders for such a project. As a School Business Manager I understand that in the National Colleges Programme for CSBM advised that successful projects must have the full support and backing of all key stakeholders. Something that I feel has been lacking on this project. Some months ago this project became public knowledge within the community and staff and parents at the school widely advertised that the expansion was in fact already approved. Whilst I appreciate that the expansion is to benefit housing stock in the new Wheelock Area and the Area of Ettiley Heath I believe this to have a significant impact on the schools currently in Sandbach. As a resident of Ettiley Heath I realise that a number of the children already attend schools locally such as Elworth C of E. I feel that this proposal would in fact jeopardise the future of other schools within the community. I understand that a feasibility study was carried out but feel that one should have been
Member of School Staff	Sandbach Primary	No	I feel that there have been problems properly planning this process. Headteachers were not consulted until well after a feasibility study had been undertaken and staff at Wheelock school were telling people this project was going ahead. How can they 'know' this? Either communication has broken down or it has been assumed consultation is a paper exercise. Having been a member of staff who experienced the TLC a few years ago, I understood that if there should be an increase in numbers again, it would be relatively easy to increase numbers at Offley school. Was this reconsidered in a feasibility study? Wouldn't an increase to a 60 PAN once more be more cost effective and avoid the problems of a 1.5 entry school? I understand housing is planned for the Ettiley Heath area, where poor routes exists for any pedestrian making their way to Wheelock. Is Crewe Rd ready for the extra number of cars trying to deliver children safely to school? Remember this is the main road that serves the Boy's High School and a route to The Girl's School and the town. Parking for parents is on the main road. What will be the impact on other schools in the
Member of School Staff	Sandbach Primary	No	I strongly believe that there is no justification for expending Wheelock Primary school when there are already surplus places in other schools in the area. The money would be more effectively spent supporting the needs of the children already in the area. I beleive that this expansion is absolutely unecessary! Look at what the needs currently are and support the schools already in
Member of School Staff	Sandbach Primary	No	I strongly feel that it is unjustified to increase the PAN of Wheelock Primary School to 60 when there will be a surplus of other places for children in other schools in the Sandbach area. Children already in schools in Sandbach are suffering due to cuts in funding and this proposal is an unnecessary expenditure at this time.
Member of School Staff	Sandbach Primary	No	As a member of Sandbach community Primary school, it is very disappointing to hear that Wheelock can expand after we were told we had to reduce out intake not too long ago.
Member of School Staff	Sandbach Primary	No	I do not agree with the proposal because of the impact it will have on the smaller community schools. In my opinion you should not be creating one large school just because parents want their children to attend this school because they do extra activities, you should be using the money to help the smaller schools do the same.
Member of School Staff	Sandbach Primary	No	Expanding Wheelock will put smaller community schools in dnager of not having enough pupils.
Member of School Staff	Sandbach Primary	No	Expanding Wheelock will put smaller community schools in dnager of not having enough pupils. All schools should have equal opportunity do take extra pupils.
Member of School Staff	Unknown	No	I do not agree with this proposal at all
Member of School Staff	Elworth Hall	No	The Equality Impact Assessment does not take account of the affect on other local primary schools even though the other schools are referred to as stakeholders. There are local solutions, which are more cost effective than the proposed development. This includes using surplus capacity in two local schools. The consultation process has been flawed with apologies issued by Local Authority Officers. It is our belief that the proposed development will prejudice other local primary schools. 21.11.12
Member of School Staff	Wheelock	No	Cannot see the jusification for spending already limited funds on creating extra unnecessary places for pupils - when children with additional needs are already suffering from lack of resources.

Member of School Staff	Wheelock	Yes	Over the last few years we have had to turn away more and more children who live in our catchment area. A larger school will allow for even more opportunities for our children as we recruit more staff with different specialism. There will also be more opportunities for staff. More children will benefit from the exciting education we provide.
Member of School Staff	Wheelock	Yes	I hope the school will retain its family atmosphere as the pupil numbers grow
Member of School Staff	Wheelock	Yesfor nearly five years. During this time I have received phone calls from parents wanting their children to attend our school on what feels like a daily basis. There have also been difficult situations to deal with, that has resulted in us having siblings attending two schools at the same time and parents removing their children from our school due to a young sibling not being offered a place in reception. I have had a lot of conversations with parents who are desperate for their children to attend our school and agonise over applying due to the long history of children not being offered a place. I feel that this expansion is needed and will be welcomed by the majority of our local community, staff, parents and pupils. We are an outstanding school and this will be a fantastic opportunity for us to build on our success, improve our school building and facilities, and provide the children of Wheelock with an outstanding education
Member of School Staff	Wheelock	Yes	We are a popular school, with a growing catchment area as new housing is built. A strong sense of community which can only be enhanced by being able to accept all children in our catchment area.
Member of School Staff	Wheelock	Yes	This is a very exciting school to work in. Children are happy; staff are motivated and creative. In my opinion, Wheelock is most able to use the opportunity to expand the school for the benefit of our school family.
Member of School Staff	Wheelock	Yes	Wheelock Primary school would benefit from the planned extension work going ahead, ensuring quality, outstanding teaching for children now and in the future. The extension would allow for excellent education for a vast amount of children within the community.
Member of School Staff	Wheelock	Yes	I have lived in Wheelock for 38 years. In this time I have seen the village develop and grow. The extension to Wheelock Primary School will be a huge benefit to Wheelock as a village. It means that all local children will have the opportunity to learn at our outstanding school.
Member of School Staff	Wheelock	Yes	I support the proposal to expand our school giving local families the opportunity to bring their children to this school, and to be able to serve the local community
Member of School Staff	Wheelock	Yes	Staff and parents have a real commitment to our community school. It is important to us that as many children as possible from within our community have the opportunity to come here. Expansion will ensure that the school grows together with the local population and continues to meet its needs
Member of School Staff	Wheelock	Yes	I support the proposed expansion of Wheelock Primary School. It is an outstanding popular school which my own children were also educated in. There will be many more children in Sandbach who could benefit from the fantastic education that Wheelock offers, if the school were to expand.
Member of School Staff	Wheelock	Yes	Extra space for intervention groups will be extremely beneficial - we currently have no space for hearing impaired children to use for quiet group work. The expansion will bring more resources, space, expertise to our school which will help us strive for excellence. I am in full support of the proposal.
Member of School Staff	Wheelock	Yes	It will be great to have some more areas for group / intervention work. At the moment space is limited. The expansion will only make our outstanding school better.
Member of School Staff	Wheelock	Yes	To provide a stimulating and challenging environment for the early years department.
Member of School Staff	Wheelock	Yes	The proposed expansion would provide more children the opportunity to have an education that is creative, unique and outstanding.
MP	N/A	Yes	I visited Wheelock Primary School on Friday 16th November and spent some time with both Joanne Dyson and group of Governors, looking round the school, and speaking with teachers and pupils. The Head of Governors showed me, both on plan and on site, the area of the proposed extension and I write to record my support for this proposal as set out in the public consultation document of September 2012.
Other	N/A	No	-The proposal is an expensive quick fix and does not take account of other schools in the area. The significant expansion of only one school may have an adverse effect on the services that other schools can offer to their children, particularly those that are vulnerable. There has been no proper investigation into the effect of the proposal upon other schools or any alternatives. - The proposal does not reflect the Local Authority's preference for schools to be 1 FE (1 class entry) or 2 FE (2 class entry). It will cause competition between schools and erode community cohesion. The majority (7 out of 8) of local Head teachers are not supportive of the proposal. The preferred solution is to accommodate the 2013/24 intake within the current school organisation and carry out a thorough study into school for the long term, taking account of any local housing development. - The better alternative would be to return Offley Primary school to a 2FE. This would be a cost effective solution for the short and long term. Offley operates with 12 classes and has the infrastructure to support 2 FE. There would be no cost implication in the short term as the school can accommodate an intake of 60 pupils at KS1. Two further classes will be needed by 2015 but the cost of these will be significantly less than the £1.7m proposed for Wheelock school. This proposal
Parent	Offley	No	Unfair on other schools on Sandbach that have a large intake. Say no to housing developments and expanding schools will not be necessary.
Parent	Offley	No	I do not believe that Sandbach requires a geographical re-location of school places. This would adversely affect existing schools both financially and staffing wise. There are enough places in the area, and not most schools are within 20 mins walking distance from most homes. In the current economic environment if this money must be spent then spread it out across the schools to improve existing facilities especially in sport and IT.
Parent	Offley	No	I think that the proposed £1.7 million would be better spent across the other schools in the local area. Also other schools such as Offley. Primary would be better suited to take an increase in pupil numbers and it would not cost as much to revert this school back to on 2 form entry.
Parent	Offley	No	No comments
Parent	Offley	No	No comment

Parent	Offley	No	No comment
Parent	Offley	No	No comment
Parent	Offley	No	No comment
Parent	Offley	No	increasing Wheelock Primary School to 1.5 FE makes very little sense considering the extensive work that will need to be done and money spent to accommodate pupils. Especially in light of Offley Primary's ability to easily accommodate the pupils in the short-term and minimal building work in the long term. Having 2 schools at 1.5 FE is neither logical nor in line with council / LA preferences. Increasing Wheelock's entry seems to be a quick fix to the problem created by them accepting (by request of the LA) extra children this academic year. If the school remains at 1 FE this inevitability leaves a single cohort at 45 however I would argue that increasing to 1.5 FE for the foreseeable future fixes one problem, but creates many others: - Lack of space in Wheelock grounds - parking on the main road - excessive spending - an ever widening catchment which is already sprawling I understand there is great opposition and for good reason.
Parent	Offley	no	The impact on other schools needs to be carefully considered. If there is currently a Primary school in Sandbach which is able to accommodate additional pupils, it appears to make far more sense to make use of this facility, rather than invest a huge sum of money into Wheelock Primary School.
Parent	Offley	No	Offley Primary school has in the last few years had its intake capacity reduced to allow other Primary schools within the town to remain open despite the reducing annual intake. Rather than spend money on new buildings at Wheelock it would make more sense to restore the capacity/intake of Offley. This would have little or no financial implication for the Council and would mean that both Offley and Wheelock could run without the need for mixed year groups. Mothballing resources at one location in order to spend £1.7m on building new resources at another is not good practice and is particularly pertinent in the current economic climate. I opposed the reduction at Offley Road in the first place and have two children at the school who would potentially benefit from the removal of the mixed year class system currently in place.
Parent	Wheelock	No	No comment
Parent	Offley	No	No comment
Parent	Offley	No	No comment
Parent	Offley	No	No comment
Parent	Offley	No	No comment
Parent	Offley	No	No comment
Parent	Offley	No	No comment
Parent	Offley	No	No comment
Parent	Offley	No	I feel it is a mistake to allocate a large portion of resources to one school, to the detriment of other schools in the area. All schools in Sandbach have new or proposed housing developments in their catchment areas. The money should be evenly distributed after proper planning to ensure all schools are best placed to receive the increased pupils numbers that this issue has created.
Parent	Offley	No	As the government now states it has overspent by £1 billion on the education budget. Resulting in further cuts, it seems highly inappropriate to spend vast sums of money on one project to the detriment to 7th/8th of the other local schools. This project should not be followed through and a fair solution found.
Parent	Offley	No	No comment
Parent	Offley	no	Prefer Offley to have the funding thereby allowing classes to remain in years without mixing eg. Yr 4 / Yr 5
Parent	Offley	No	I cannot understand a proposal which will leave two schools in the area with a PAN 45 (1.5 FE) at considerable expense to the tax payer and with the difficulties this creates for both pupils and schools. Surely it would make more sense to use existing spare capacity within the other schools in the short term (such as reverting the PAN at Offley to 60 (2 FE), than have thorough review of provision in the Sandbach area with full consultation and consideration of catchment areas, as was done a few years ago, in the light of proposed house building in the area with associated increases in pupil numbers.
Parent	Offley	No	No comment
Parent	Offley	No	No comment
Parent	Offley	No	No comment
Parent	Offley	No	No comment
Parent	Offley	No	It is unfair one school without considering all of the other schools in Sandbach, why not fund expansion at all schools, giving all areas equal abilities and chances
Parent	Offley	No	Larger class sizes may effect standards of teaching and disrupt current pupils achievements.
Parent	Offley	No	Crazy amount of money to be spending on one school. Don't quite understand why the money can't be spent on increasing capability for local schools to hold more children.
Parent	Offley	No	The shortage of school places within Sandbach could have been predicted years ago and resulted in only 4 free places throughout the whole town in 2012. Committing 1.7m to Wheelock school is a "knee jerk" reaction to ease the problems created by Cheshire East Council letting building developments increase year on year. Investment into all schools will be fair and give parents diversity when selecting Primary schools.
Parent	Offley	No	Appears that the Council have no coherent plan. Only a few years ago schools were being closed and class sizes reduced and now propose over £1m school expansion. How do I know they have it right this time?
Parent	Offley	No	No comment
Parent	Offley	No	No comment
Parent	Offley	No	No comment
Parent	Offley	No	No comment
Parent	Offley	No	No comment

Parent	Offley	No	The expansion of just one school in the area will not solve the overall problem of increased need for child spaces. The proposed massive housing and retail developments within Sandbach will create a far greater need than this proposal can cover. All of the Sandbach schools should be considered for increased intake particularly those that were put at risk of closure recently and this would be a far cheaper option than the £1.7 million planned.
Parent	Offley	No	If improvements are to be made to Primary school in Cheshire East funds should be divided equally between the schools.
Parent	Offley	No	Offley Primary school ran very well as a 2 class entry for many years. Offley has the space and the experience in my opinion to do so again
Parent	Offley	No	Proposed budget is excessive to fund just 1 school 1.7 million!! Money better spent across all Sandbach schools. Strongly object to such a large sum of money benefiting only one school.
Parent	Offley	No	I support Offley Primary being expanded to a double intake school to accommodate increasing numbers. There is no sense in making two schools, 1 1/2 intakes; this is difficult to administer.
Parent	Offley	No	Wheelock School is already bad enough and causes major traffic issues now and safety to children must come first. If you think your going to double their intake. The kids from the boys school etc who have to walk down there are going to be at risk. If other school can extend their intake there is no need for it and a waste of money.
Parent	Offley	No	-The proposal is an expensive quick fix and does not take account on other schools in the area. The significant expansion of only one school may have an adverse effect on the services that other schools can offer to their children, particularly those that are vulnerable. There has been no proper investigation into the effect of the proposal upon other schools or any alternatives. - The proposal does not reflect the Local Authority's preference for schools to be 1 FE (1 class entry) or 2 FE (2 class entry). It will cause competition between schools and erode community cohesion. The majority (7 out of 8) of local Head teachers are not supportive of the proposal. The preferred solution is to accommodate the 2013/24 intake within the current school organisation and carry out a thorough study into school for the long term, taking account of any local housing development. - The better alternative would be to return Offley Primary school to a 2FE. This would be a cost effective solution for the short and long term. Offley operates with 12 classes and has the infrastructure to support 2 FE. There would be no cost implication in the short term as the school can accommodate an intake of 60 pupils at KS1. Two further classes will be needed by 2015 but the cost of these will be significantly less than the £1.7m proposed for Wheelock school. This proposal
Parent	Offley	No	-The proposal is an expensive quick fix and does not take account on other schools in the area. The significant expansion of only one school may have an adverse effect on the services that other schools can offer to their children, particularly those that are vulnerable. There has been no proper investigation into the effect of the proposal upon other schools or any alternatives. - The proposal does not reflect the Local Authority's preference for schools to be 1 FE (1 class entry) or 2 FE (2 class entry). It will cause competition between schools and erode community cohesion. The majority (7 out of 8) of local Head teachers are not supportive of the proposal. The preferred solution is to accommodate the 2013/24 intake within the current school organisation and carry out a thorough study into school for the long term, taking account of any local housing development. - The better alternative would be to return Offley Primary school to a 2FE. This would be a cost effective solution for the short and long term. Offley operates with 12 classes and has the infrastructure to support 2 FE. There would be no cost implication in the short term as the school can accommodate an intake of 60 pupils at KS1. Two further classes will be needed by 2015 but the cost of these will be significantly less than the £1.7m proposed for Wheelock school. This proposal
Parent	Offley	No	This would cause severe disruption to the school and the problem of parking/ traffic even worse
Parent	Wheelock	No	I don't believe the proposed extension will accommodate 315 children, certainly the outdoor play area doesn't and this is of great concern at break times during minimal supervision. Parent parking has already been restricted and is a major problem. This is a situation that will only get worse. How can the local authority propose this expansion when other Primary schools are not full to capacity??
Parent	Unknown	No	We strongly urge the council to rethink their proposals to make a school to 1.5 class entry - this is not a cost effective it would make better sense to bring those schools who can accommodate a 2 class year group back up to their original intake before the cuts imposed on schools a few years ago which would be a cheaper and more cost-effective proposal especially in these days of austerity.
Parent	Offley	No	No comment
Parent	Offley	No	3 years ago we were told that our school had to lose 15 places from its intake of 60, because forecasting of population would decrease, and there was less need for school places. This had a devastating effect on our school as it forced us to accept mixed year classes and affected our budget. Why, 3 years on, is Wheelock school being allocated more places. This will force Wheelock to go down the route of mixed year classes as well. Why is this necessary? Was the critical forecasting wrong? and if so, why not admit the error and reallocate the places back to Offley so the school can have their original budget revisited and go back to same year classes? Admit the decision 3 years ago was the wrong and do right by Offley school

Parent	Offley	No	I cannot believe that this proposal has been put forward let alone is now being considered as a serious option in view of the current economic climate. To spend such an enormous amount of money on one school is totally irresponsible especially when the infrastructure/resources and demand exist at Offley Primary school. This school previously had a two form entry; it was reduced a few years back to save another local school from closure at significant cost! - In the last consultation which was about 'cutting provision' and which outlined the falling demand for provision in the area, it now seems incredible that this exercise needs to be repeated for, - 'significant shortfall of places across 6 schools by 2017 with an overall shortfall by 11% (144 school places)' (Butcher,2012) - A complete and utter waste of tax payer's money! - The last proposal was also done on projected pupil numbers for the town and schools were reduced accordingly – Did somebody get their figures wrong or did they forget to include all the new housing development? - When the last proposal was carried out, the reduction at Offley Primary School was done on the basis that it could easily be reversed if demand increases thereby saving further costs on infrastructure. Surely, the way forward is to review existing places/current demand based on existing i
Parent	Offley	No	I cannot believe that this proposal has been put forward let alone is now being considered as a serious option in view of the current economic climate. To spend such an enormous amount of money on one school is totally irresponsible especially when the infrastructure/resources and demand exist at Offley Primary school. This school previously had a two form entry; it was reduced a few years back to save another local school from closure at significant cost! - In the last consultation which was about 'cutting provision' and which outlined the falling demand for provision in the area, it now seems incredible that this exercise needs to be repeated for, - 'significant shortfall of places across 6 schools by 2017 with an overall shortfall by 11% (144 school places)' (Butcher,2012) - A complete and utter waste of tax payer's money! - The last proposal was also done on projected pupil numbers for the town and schools were reduced accordingly – Did somebody get their figures wrong or did they forget to include all the new housing development? - When the last proposal was carried out, the reduction at Offley Primary School was done on the basis that it could easily be reversed if demand increases thereby saving further costs on infrastructure. Surely, the way forward is to review existing places/current demand based on existing i
Parent	Wheelock	No	Ofsted have deemed Wheelock school as outstanding. Unfortunately the change in head teacher has not been as it was expected to be and it is unlikely that we will be getting such a high rating again. A lot of parents, pupils and some staff are not happy and think that the pressure of this expansion will ultimately destroy what we have all worked so hard to gain. The cost of the expansion, not only financially, but to the landscape and community ethos of Wheelock School is very high. Would it not be more cost effective to fully reopen Sandbach Community Primary School, which is already suited for this purpose? Over the past 10 Years I have been involved in a number of petitions against housing developments on the grounds that the school was at full capacity. We were told on each occasion that the numbers of children in the area are dropping. We knew this to be not true, so why was there such a discrepancy in the figures?
Parent	Offley	No	The proposed expansion of Wheelock school will result in two schools in Sandbach having an undesirable 0.5 FE intake (Offley School operates a 1.5 FE intake). The 0.5 FE results in mixed classes being operated, and is not in line with the Local Authority's preference for schools to be either 1 FE or 2 FE. It also seems like a terrible waste of a large amount of taxpayers' money to expand wheelock school to 1.5 FE when Offley School could more easily and cheaply be expanded to 2 FE. Offley already has the capacity of a 2 FE reception intake (and in fact expanded to take this sized intake in September 2012 due to demand in the local area). Instead of building FOUR classes at Wheelock, the same capacity could be added to Sandbach schools by building just TWO classes at Offley, and that would not need to happen until 2015, giving more time for planning and finding the best process for the work. I believe this proposal has not been properly considered. There has been no proper investigation into the effect of this proposal on other schools in the area, and no alternatives have been considered. Rather than rushing an expansion in that has not been properly thought through I urge the Council to accommodate the 2013/24 intake within the current school organisation and carry out a thorough study into school organisation for the
Parent	Offley	No	It seems quite ludicrous and wasteful that Cheshire East Council are even considering this. Several years ago I remember Offley Primary school had their numbers reduced, despite all concerned being against. Now Wheelock are to have their numbers increased. I have to wonder if this is favouritism or just plain stupidity. Yet again Offley is sidelined even though they are oversubscribed year on year.
Parent	Wheelock	No	I am totally against the proposed expansion, as are my husband and children, all of whom are pupils at Wheelock school. We feel it will spoil the ethos of the school entirely, it is going to have a negative impact on the available outdoor space for recreation, and also on facilities within the school and we feel, will be detrimental to the school and its current pupils. The addition of the portacabin / temporary classroom was disruptive enough, we dread to think of the chaos caused by the proposed addition of another 4 classrooms. Surely a better, more sensible option would be the building of a new Primary school in either the Ettiley Heath/ Elworth area? We feel very strongly against these proposals and hope you will listen to the views of parents / pupils and consider other options.
Parent	Wheelock	No	Wheelock School is in great need for funds to bring up to date its facilities such as leaking roof and toilets this would hopefully be addressed if the expansion was to proceed. However I am aware of the need for more Primary places in Sandbach but I would question whether the expansion of Wheelock is just a short term fix to accommodate catchment requirements. I feel the proposed plans for new houses in and around Sandbach would exceed the new places created at Wheelock. I think the time should be taken to direct resources effectively taking the future proposed developments into consideration i.e. - new school with practical catchments to allow children to walk to school safely. Currently the vast majority of children have to commute to Wheelock on either the school bus which does not run without problems or car this consequently causes congestion around the school which will only be exaggerated with the school extending its intake by 50% this will be children who have to travel as the school has always taken of the closest children first.

Parent	Wheelock	No	While Wheelock School grounds could theoretically support some expansion, the immediate infrastructure around the school cannot cope with a 50% increase in school traffic without major improvements and alternatives being created. At 210 pupils, there is major traffic congestion at each end of the school day. This has been exacerbated with the short-sighted decision to paint double yellow lines around a large section of the Chartwell Park side road, restricting short term, safe, accessible parking in favour of residents who arrived long after the school was built. It's important to note that the Chartwell Park junction onto Crewe road is already a restricted visibility, badly designed junction with a major through road. It is dangerous even when traffic volumes are low because of the build exit to the right and the generally excessive speed of traffic on Crewe Road. There are issues of parents parking in the current school car park creating access problems and safety concerns for staff, pupils and tradesmen; a situation that will worsen with 505% more traffic attempting to find a location to park. Daily school parking on Crewe Road today creates safety, visibility and access issues because of the lack of an alternative. As a local road user the school day start and end presents many safety challenges for car drivers, pedestrians and
Parent	Offley	No	The plan is an expensive quick fix, with disproportionate spend in one school. There has been insufficient exploration of the issues that neighbouring schools will face as a result, particularly financially following the expansion of ALL year groups, not just the intake / reception classes. A clear statement that pupils from other schools in other years will not be accepted has NOT been received. Many schools will only have to lose a few pupils to be in a deficit situation. The loss of pupils, combined with the changes to SEN funding, mean those services to the most vulnerable are likely to be squeezed yet further. Even if SEN services can be maintained from an overall drop in funding, the costs will have to be met from core budgets, creating a situation of competition between pupils with and without protected characteristics / SEN. Either way, proper consideration of the impact upon neighbouring schools and educational services, particularly to those most vulnerable, has not been given. 7 out of 8 headteachers (i.e. all except Wheelock) oppose this plan. The plan is also not congruent with the Authority's own schools organisation consultation document, stating that One or Two form entry schools are preferred. This plan will create a majority of non PAN 30/60 schools. The financial decision making behind the project is irrational. Offley
Parent	Wheelock	No	The school playing fields is already small extending the school building will only make it smaller. There are already issues with parking around the school at the start of the school day. There have also been more than one occurrence of too many children getting the school bus which then had to return to collect the additional children which meant they were late causing disruption. Offley Road School has spare capacity to take additional pupils without the need to extend their school buildings
Parent	Wheelock	No	Extension in the school will mean more houses built in the surrounding area which I am against
Parent	Wheelock	No	I am concerned that the children will lose a considerable amount of playground. Will there be sufficient area for 315 children to play in especially when the field is wet? Also parking is a nightmare at the best of times and this year even worse only with the extra reception year 1 cannot see how the premises can withstand such a huge impact on its footprint. There are other schools in the area that can accommodate extra children they should be used first.
Parent	Unknown	No	The infrastructure of the school will not support the volume of students. The close knit community of the school is certain to disappear. A large extension will leave very little area for such a great number of children to play.
Parent	Wheelock	No	Wheelock is a lovely little school in a small village. We were led to believe that the last time the school was extended it would be the last time due to the square footage per child. Has the square footage per child decreased??
Parent	Wheelock	No	We feel that the expansion of the school will have an effect on the children that are already there, as we are told that a class will be taught in the hall while work is being done which as an effect on all children, PE lessons, lunch time. We also feel that it may lose its family environment that it has at present once more children are accepted. Also not enough outdoor space. Parking is also a problem now so will be more of an issue.

Parent	Wheelock	No	I appreciate as any parent of children in the local area that the demand for school places is set to rise, particularly as the council has agreed to so many new housing developments in the area. It does however, surprise me on a historical level that this demographic trend was not identified when the children of this academic year were actually born. Surely Sandbach has not in the last year seen a huge influx of children in to the area all at the same time, and in the same catchment area, that are the same age? Perhaps if the demographic trend had been studied, such an immediate and 'knee jerk' response would not be needed to solve the problem. The impact upon our school has been detrimental with the preparations for only a temp classroom. please consider the following: my daughter in year 2 is still an infant yet she spends every playtime in the junior playground. The school never communicated this to parents, this lack of communication is not the actions of an 'outstanding school'. The type of language and play is also very different in the junior playground.... eating packed lunches in classrooms, waiting time for dinners longer, hall out of use for PE, and clothing required for outdoor activities, fewer areas for children to play in, sandpit and other play items removed to make way for temp classroom, moving year 6 into IT room.
Parent	Offley	No	A 1.5 form entry is very disruptive to pupils and means regular changes to peer groups. This should be avoided as far as possible. My daughter, currently at Offley Primary school is in a split year and it is far from ideal. There are also large classes at Offley primary especially in juniors >30 pupils in a class. It would seem more cost effective and beneficial to pupils in the area to instead re-introduce a 2 form entry system at Offley. This could be easily implemented with very minimal cost rather than £1.7 for new facilities at Wheelock. There seems to be very limited justification for the selection of Wheelock to go to a 1.5 form entry system.
Parent	Offley	No	There is plenty of spaces in other schools in the area which are facing shortage of funds due to reduced pupil numbers. The money should be spent in repairs of all the schools in the area.
Parent	Offley	No	The money should be spent equally on all the schools in the area. Nearby schools also have the set up and the space for more children and parents should consider sending their children to those schools.
Parent		No	Ofsted have deemed Wheelock school as outstanding. Unfortunately the change in head teacher has not been as it was expected to be and it is unlikely that we will be getting such a high rating again. A lot of parents, pupils and some staff are not happy and think that the pressure of this expansion will ultimately destroy what we have all worked so hard to gain. The cost of the expansion, not only financially, but to the landscape and community ethos of Wheelock school is very high. Would it not be more cost effective to fully reopen Sandbach Community Primary School, which is already suited for this purpose? Over the past 10 years I have been involved in a number of petitions against housing developments on the grounds that the school was at full capacity. We were told on each occasion that the numbers of children in the area are dropping. We knew this to be not true, so why was there such a discrepancy in the figures?
Parent	Offley	No	No comment
Parent	Offley	No	detrimental effect to neighbouring schools
Parent	Offley	No	I oppose the proposal as I feel that it would be more cost effective for the council to return Offley Primary to a 2FE school which it has the infrastructure to cope with and would not need any significant investment until 2015 at which time the investment needed would be considerably less than the investment needed to expand Wheelock. Thus meaning that in this difficult financial climate the budget for schools can be more evenly distributed between all the schools in the area. The expansion of Wheelock school would also have a negative impact on the traffic and parking situation on Crewe Road which is already an issue.
Parent	Offley	No	No comment
Parent	Offley	No	No comment
Parent	Offley	No	No comment
Parent	Offley	No	I am worried about the amount of money to be spent on what seems a "quick fix" and what effect it is going to have on other schools in surrounding areas.
Parent	Offley	No	Offley Primary school would be a more cost effective solution to providing the number of extra school places required. In the present economic climate this should be a deciding factor rather than spending money that could be saved or used to better effect elsewhere. It would be wrong to add 4 extra classrooms to Wheelock when another school in Sandbach can already accommodate the intake required.
Parent	Offley	No	I am concerned why the money is being spent on this school when Offley Primary School intake has been reduced from a 2 class intake to 1.5. Offley could be returned to a larger intake without so much funding and disruption. Offley is always over subscribed.
Parent	Offley	No	Why in the current economic climate would the council consider spending £1.7 million pound on the expansion of Wheelock, when Offley Primary could be expanded back into a 2 FE school throughout, at a much cheaper cost. As a parent, I would like Offley to return to a 2 FE school in the child, causing less emotional upset at a critical time of learning. This option in my opinion should be seriously considered as more appropriate than the expansion of Wheelock.
Parent	Offley	No	Each school should be supported equally rather than one school given preference to such a proposal. Such a proposal will have adverse effects to pupils at other schools in terms of the services that are offered. Every child should be given the same opportunity as the next, money available should be split between schools. Wheelock on a busy road, I pass through everyday, parking is already an issue! I strongly disagree with this proposal!!!
Parent	Offley	No	7 out of 8 of the schools in Sandbach oppose this proposal! To expand Wheelock to 1.5 form entry (not the Authorities 1 or 2 form entry) will require the provision of 4 additional classrooms at a cost of £1.7m. Offley Primary school has adequate provision for a 2 form entry (up from 1.5) for all of ICSI and will require 2 classrooms only by Sep 2015. This will save a significant amount of the proposed cost. A review of catchment areas would also help to relieve the over applications within Wheelock. This simple exercise should be considered first.
Parent	Offley	No	The infrastructure already exists to accommodate more pupils at Offley Primary school. Spending 1.7m to create more mixed classes makes no sense. Mixed classes are confusing, cause disruption and are detrimental to our children's education. Make Offley a 2FE and invest the £1.7m on educational material.
Parent	Offley	No	We are objecting as there are other schools within Sandbach that already have the facilities to expand to take in more children without major costs involved. The money that is being earmarked for this expansion would be much better used updating facilities within the existing schools to ensure all children receive that same level of education whichever school they attend.

Parent	Offley	No	I feel that mixed classes are a compromise that should be avoided where possible. By increasing Wheelock to a 1.5FE school at a cost of £1.7m when there is an opportunity to have Offley Primary which already has the infrastructure to run as a 2 FE school, Cheshire East will have 2 schools running with mixed classes when there is an opportunity to have 2 schools with no mixed classes at a significantly lower cost. Increasing Offley to a 2 FE school would be a more cost effective solution as Offley would only require an additional 2 classes to be made available by 2015, meaning that the money currently proposed to be spent on Wheelock school could be better spent serving the educational needs of the Children of Cheshire East. The most desirable outcome for children and parents of Cheshire East is a reduction in the number of schools that are required to operate a mixed class system and the most budget possible made available for education rather than building work.
Parent	Wheelock	No view	There is a clear need to provide additional school places in Sandbach. Wheelock does not appear to be geographically located to suit the new build developments and therefore a further school bus would be required. St John's already operate a 1.5 form entry. It would surely make no sense to make one or other of these schools a 2 form entry. 1.5 form systems over complicate class group structures
Parent	Wheelock	Yes	Although it is indicated that there is a need for further primary provision in the very short term, it does not state which areas and whether this is a sustained requirement. Only 1 option is presented there will be other options to be considered before it can be determined whether this is the most cost effective/practical/ suitable option. It appears that the council has not considered all options and therefore this proposal cannot be supported without due consideration to other options.
Parent	Wheelock	Yes	No comment
Parent	Wheelock	Yes	It will help to service our growing community
Parent	Wheelock	Yes	Having moved my daughter to this school in reception we have seen her grow both academically and socially and then more places provided for young children can only benefit families and the community, giving young people the best life chances possible
Parent	Wheelock	Yes	No comment
Parent	Wheelock	Yes	No comment
Parent	Wheelock	Yes	No comment
Parent	Wheelock	Yes	No comment
Parent	Wheelock	Yes	Happy with planned proposal
Parent	Wheelock	Yes	As long as the number of pupils in thieri classes does not get too big i.e. - reception class at present is split into two, therefore each class only has 22/24 pupils. Any bigger and the children do not get enough attention/
Parent	Wheelock	Yes	The school is in need of expansion and more modernisation to keep up with the high demand for places at the school which, clearly increases every year, and to keep up with modernisation of todays technological society. More space to work allows for better teaching and learning and an increase in ability to differentiate accordingly I fully support the extension.
Parent	Wheelock	Yes	No comment
Parent	Wheelock	Yes	No comment
Parent	Wheelock	Yes	No comment
Parent	Wheelock	Yes	Although it is indicated that there is a need for further primary provision in the veryshort term, it does not state which areas and whether this is a sustained requirement. Only 1 option is presented there will be other options to be considered before it can be determined whether this is the most cost effective/ practical/ suitable option. It appears that the council has not considered all options and therefore this proposal cannot be supported without due consideration to other options.
Parent	Wheelock	Yes	No comments given
Parent	Wheelock	Yes	Having 2 children currently at Wheelock school, including 1 in the current Reception class, I feel very strongly that this proposed expansion is agreed to accommodate the curretn pupils as well including the additional intake in future years.
Parent	Wheelock	Yes	No comment
Parent	Wheelock	Yes	No more new houses all schools to full as long as class size stay small and the council support the school with funds to keep the high standards up. Car paprking round school needs to be looked at as the school run can get busy already and cathcment is over to Ettely Heath to far to walk when there little. I don't like the fact the bus has no supervision
Parent	Offley	No	Why expand a school at a cost of £1.7 million when a school already in town has room for expansion at a much lower cost? Why were school numbers at Offley reduced only a few years ago? Appears to have been very short sighted by the council!
Parent	Offley	No	No comment
Parent	Offley	No	The cost of the proposed expansion is far too high, espically during a time of recession when budgets are being cut. It seems to be a costly proposal when there are cheaper alternatives that could be considered. Mixed year classes mean children get less stability as the pupils change each year and the class sizes are considerably larger, putting extra pressure on teaching staff

Parent	Offley	No	No comment
Parent	Offley	No	No comment
Parent	Offley	No	Strongly object
Parent	Offley	No	I think it is ridiculous to make a decision to spend a significant amount of money on Wheelock when there is so much uncertainty regarding proposed housing development's in the town. The expansion should be put on hold until planning permission has been granted with the proposed Wheelock intake being absorbed into other schools with capacity. I would also like to know how extending Wheelock to a 1.5 FE fits in with the Draft School Organisational Framework?
Parent	Offley	No	I strongly oppose this expansion. The schools in Sandbach all need funding to support growth, changes and increase in day to day lives plus the growing number of families coming into the area. The Schools all need a share in 1.7 million pounds not just one. My child for one needs 1 to 1 support in his school and i am sure there are more that need this help so please think about this prior to giving such a ridiculous amount of money to 1 school. Many schools need to have repairs and money spend on resources so as a parent of a child in a school in Sandbach and also 1 that will start in a few years please re-think this request by Wheelock and divide these valuable funds between them all. The 6 schools in Sandbach would dearly love 2.5 million each and think of the amazing schools the town would have with that funding. This is what our town needs.
Parent	Offley	No	It would seem more sensible to increase the intake Offley school that already has the infrastructure to support it, therefore saving considerable costs which could be used to enhance the childrens education.
Parent	Offley	No	I feel it is not justified to spend that amount of money, when expenditure is being cut. If that amount of money is available should be spent on all the local schools not just on one.
Parent	Offley	No	The proposal seems to miss the point that Offley Road Primary already has the capacity to support a 2 FE intake. If budget of £1.7m is available surely it would be better spent providing additional services rather than redundant capacity.
Parent & Governor	Elworth Hall	No	The equality Impact Assessment does not take account of the affect on other local primary schools even though the other schools are referred to as stakeholders. There are local solutions, which are more cost effective than the proposed development. This includes using surplus capacity in two local shops. The consultation process has been flawed with apologies issued by Local Authority Officers. It is my belief that the proposed development will prejudice other local primary schools.
Parent & Governor	Offley PS	No	No comment
Parent & Governor	Offley	No	The plan is an expensive quick fix, with disproportionate spend in one school. There has been insufficient exploration of the issues that neighbouring schools will face as a result, particularly financially following the expansion of ALL year groups, not just the intake / reception classes. A clear statement that pupils from other schools in other years will not be accepted has NOT been received. Many schools will only have to lose a few pupils to be in a deficit situation. The loss of pupils, combined with the changes to SEN funding, mean those services to the most vulnerable are likely to be squeezed yet further. Even if SEN services can be maintained from an overall drop in funding, the costs will have to be met from core budgets, creating a situation of competition between pupils with and without protected characteristics / SEN. Either way, proper consideration of the impact upon neighbouring schools and educational services, particularly to those most vulnerable, has not been given. 7 out of 8 headteachers (i.e. all except Wheelock) oppose this plan. The plan is also not congruent with the Authority's own schools organisation consultation document, stating that One or Two form entry schools are preferred. This plan will create a majority of non PAN 30/60 schools. The financial decision making behind the project is irrational. Offle
Parent & Governor	Offley	no	No comment
Parent & Governor	Offley	No	I do not agree with this proposal at all
Parent & Governor	The Dingle	No	I am concerned that the shortfall in school places is not being spread more evenly across the whole Sandbach area. It seems to me to be more sensible to look at increasing the size of three or four primary schools by a smaller amount rather than increasing a single school by a large amount. If the current plans for building in the Haslington and Winterley areas come to fruition then I suggest that an increase in the size of accommodation of the primary schools in Haslington would be much more appropriate. I do not think it is a good thing for young children to be travelling significant distances to a school, and that it is both good for the community and good for the environment to limit the amount of travel that is required by families in the early morning. It would seem to me that there are social justice issues around creating a super- primary school in an area, that can afford with the economies of scale that come in a much larger institution to invest in technologies and facilities that are denied to other schools. It would also appear to me to be unreasonable to place an expectation on parents that would have to travel significant distances to take
Parent & Governor		No	The proposal makes inadequate reference to the geographical spread of proposed housing development in the area. This will mean that there is a requirement for expansion across many locations and the proposal on the table is at one of the smallest available sites within the area, meaning that there will be additional expense elsewhere - this could be reduced with forward planning. The proposal runs contrary to the stated objectives in the School Organisation Plan of seeking one/two form PAN (this proposal is for 1.5 PAN). The impact on other local schools has not been explored adequately in the EIA statement prepared. There will be an immediate and negative impact on other Primary schools within the area as whole families move their children to the created vacant spaces in other year groups at Wheelock

Parent & Governor	Wheelock	Yes	A Community School must be capable of serving the community in which it is sited. For a number of years children who live in catchment, or who have siblings in the school, have been unable to join the school community due to a lack of capacity. Indeed, when we moved to Wheelock 6 years ago, there was no space available for my eldest child to attend Wheelock although the school could offer my younger child a place. As the local community grows it would seem sensible to enlarge Wheelock Primary to prevent our local children having to travel increased distances to other primary schools with all the resultant problems of traffic congestion, pollution parking etc. arising around other schools in the town or further a field.
Parent & Governor	Wheelock	Yes	A very important and necessary development that will support local families who wish their children to attend their local school. Wheelock Primary School is outstanding and will rise to the challenge of expansion. A superb investment of councils money!
Parent & Member of Staff	Offley	No	I am completely against this proposed extension. It would be a negative impact on all the schools in the area. That enormous amount of money to be spent in only one school will be adverse to all the others. Our children need resources and support especially for the ones with special needs like mine. The problem of allocating more children could be solved in a lot more cost effective way (Offley can operate with two classes per year group) and all schools in Sandbach can carry on giving their children the support they deserve.
Parent & Member of Staff	Offley	No	I feel that full consideration has not been made to spending 1.7 million pound on the expansion of Wheelock school when there are other schools in the area that could accommodate a 2 FE facility at a much cheaper cost. Offley espically has had a fantastic refurbishment/ expansion within the last two years and currently has the classes to subtain a 2FE admission in 2013, with the need to only expand the Junior classes to allow 2 FE throughout the school within the next couple of years. In this economy it is ludicrous to not consider all options.
Parent & Member of Staff	Offley	No	All other schools could slightly increase saving the cost of expanding Wheelock school. Then the money can be split between schools.
Parent & Member of Staff	Offley	No	No comment
Parent & Member of Staff	Wheelock	Yes	This expansion would give so many more children in our community to benefit from a creative and stimulating education here at Wheelock
Parent & Member of Staff	Wheelock	Yes	I understand how parents in the local area feel when their child can't attend their local school due to full capacity. This happened to me as a parent and I was very lucky that my child got a place from the waiting klist but I know of many local paretns who didn't I feel expanding Wheelock would be very benefical to parents in the local area for their child to attend such an outstadning school
Parent & Member of Staff	Wheelock	Yes	No comment
Pupil	Wheelock	Yes	I think we should let more people to come to are school
Pupil	Wheelock	Yes	More people can go there
Pupil	Wheelock	Yes	It will be good to have more children in the school
Pupil	Offley	No	No comment
Pupil	Offley	No	-The proposal is an expensive quick fix and does not take account on other schools in the area. The significant expansion of only one school may have an adverse effect on the services that other schools can offer to their children, particularly those that are vulnerable. There has been no proper investigation into the effect of the proposal upon other schools or any alternatives. - The proposal does not reflect the Local Authority's preference for schools to be 1 FE (1 class entry) or 2 FE (2 class entry). It will cause competition between schools and erode community cohesion. The majority (7 out of 8) of local Head teachers are not supportive of the proposal. The preferred solution is to accommodate the 2013/24 intake within the current school organisation and carry out a thorough study into school for the long term, taking account of any local housing development. - The better alternative would be to return Offley Primary school to a 2FE. This would be a cost effective solution for the short and long term. Offley operates with 12 classes and has the infrastructure to support 2 FE. There would be no cost implication in the short term as the school can accommodate an intake of 60 pupils at KS1. Two further classes will be needed by 2015 but the cost of these will be significantly less than the £1.7m proposed for Wheelock school. This pro
Pupil	Wheelock	No	Our schools was like a large family, everyone knew each other. But since September when two classes started in September when two classes started in reception things became complicated and there are to many children to get to know. It just the same happy place that it used to be last year. I walk to school and the amount of cars outside is really scary and dangerous. I am scared that with more cars there will be an accident and someone will get hurt.
Pupil	Wheelock	No	If you extend the school that means that more children come and more teachers are required the school will be more crowded and a lot of people do not like being crowded and the education will not be the same because less one to one will be there for the people that need it
Pupil	Wheelock	No view	I don't know what to choose. I don't mind what happens
Pupil	Wheelock	No view	I don't know what to choose. I don't mind what happens
Pupil	Wheelock	No view	I don't mind
Pupil	Offley	No view	No comment
Pupil	Wheelock	No view	No comment

Pupil	Wheelock	No view	No comment
Pupil	Wheelock	No view	No comment
Pupil	Wheelock	No view	No comment
Pupil	Wheelock	No view	Because I like the way it is but it will help people
Pupil	Wheelock	No view	I like the school the way it is but it would help a lot of people if we extended. I think building up would be better as the playground will stay the same.
Pupil	Wheelock	No view	No comment
Pupil	Wheelock	Yes	I think we should let people in so we can make more friends
Pupil	Wheelock	Yes	I think we should because this is a good school and more children should join in.
Pupil	Wheelock	Yes	I think we should expand the school so we can have more clever people
Pupil	Wheelock	Yes	Wheelock is an outstanding school and I think it would be nice to let over people come to this school
Pupil	Wheelock	Yes	The more children we have at school the more friends we will make
Pupil	Wheelock	Yes	We will have much more room and more children to play with
Pupil	Wheelock	Yes	I think we should have more prople come to the school because it is great
Pupil	Wheelock	Yes	I think that we need more people so we can make more friends
Pupil	Wheelock	Yes	I think people should come to are Primary School
Pupil	Wheelock	Yes	I think we should expand the school so we can get get more people
Pupil	Wheelock	Yes	I think we should expand the school to help the local children to join us
Pupil	Wheelock	Yes	More people in our school
Pupil	Wheelock	Yes	No comment
Pupil	Wheelock	Yes	I think that it is a great idea because other children can join are school and so that we can make friends
Pupil	Wheelock	Yes	I want to make the school bigger becasuse uyou can make new friends
Pupil	Wheelock	Yes	Because I want more People to come and like our school
Pupil	Wheelock	Yes	I want are school to be bigger
Pupil	Wheelock	Yes	I will make our school an even better place to be
Pupil	Wheelock	Yes	I think that we should because it would be nice to now more people
Pupil	Wheelock	Yes	We need to let people have a chance
Pupil	Wheelock	Yes	I think we should to get more people to come to the school
Pupil	Wheelock	Yes	I would like other people to have a chance
Pupil	Wheelock	Yes	I would like to make our school bigger so we can make our school even more outstanding
Pupil	Wheelock	Yes	I am saying yes so local kids can come
Pupil	Wheelock	Yes	I think that it will be good to expand the school then it will other people will come to are school
Pupil	Wheelock	Yes	Yes because we will get more friends to play with
Pupil	Wheelock	Yes	I think we should let more people in so we can have grounds.
Pupil	Wheelock	Yes	I think we should get bigger so more children can join our wonderful school
Pupil	Wheelock	Yes	No comment
Pupil	Wheelock	Yes	I like the school the way it is but it will help make friends and people will get in
Pupil	Wheelock	Yes	It gives children a chance for an education
Pupil	Wheelock	Yes	More friends can be made but there would be less playground space
Pupil	Wheelock	Yes	It could help the amount of people and we could make new friends. The only problem is that it could be crowded on the field
Pupil	Wheelock	Yes	I am looking forward to being in a new classroom!!
Pupil	Wheelock	Yes	I think that it would be great to get a new extension and I am very excited cause we (Y4) maybe, might need to go in the hall for a bit
Pupil	Wheelock	Yes	That would be great for the school. Can't wait a hope the classrooms are good.
Pupil	Wheelock	Yes	I'm very excited happy that we are having a new classroom in year 5 and make are classroom the biggest in this school
Pupil	Wheelock	Yes	That sounds good about having a knew classroom
Pupil	Wheelock	Yes	No comment
Pupil	Wheelock	Yes	I think it's a great idea because we will have over 300 people in the school
Pupil	Wheelock	Yes	It's a good idea having 5 new classroom
Pupil	Wheelock	Yes	No comment
Pupil	Wheelock	Yes	It will be really good!
Pupil	Wheelock	Yes	Sounds good I'm in
Pupil	Wheelock	Yes	I' m very excited! About 5 new classes
Pupil	Wheelock	Yes	I think it will be a great idea because only here for another two years so it might be good!
Pupil	Wheelock	Yes	It will be great to have more children in our school

Pupil	Wheelock	Yes	Because having a new classroom will be good
Pupil	Wheelock	Yes	I think it is a great idea to add more to our school
Pupil	Wheelock	Yes	I will miss the old classroom but It will be nice and new so that will make me happy.
Pupil	Wheelock	Yes	No comment
Pupil	Wheelock	Yes	No comment
Pupil	Wheelock	Yes	No comment
Pupil	Wheelock	Yes	No comment
Pupil	Wheelock	Yes	No comment
Pupil	Wheelock	Yes	No comment
Pupil	Wheelock	Yes	It is good because if we don't there will be an mobile classroom forever
Pupil	Wheelock	Yes	No comment
Pupil	Wheelock	Yes	No comment
Pupil	Wheelock	Yes	No comment
Pupil	Wheelock	Yes	No comment
Pupil	Wheelock	Yes	No comment
Pupil	Wheelock	Yes	No comment
Pupil	Wheelock	Yes	Yes you should because it will make the school bigger
Pupil	Wheelock	Yes	No comment
Pupil	Wheelock	Yes	No comment
Pupil	Wheelock	Yes	No comment
Pupil	Wheelock	Yes	No comment
Unknown	Offley	No	No comment

Count of Response			
Connection	School	Response	Total
Councillor	N/A	No view	1
	N/A Total		1
Councillor Total			1
Governing Body	Offley	No	1
	Offley Total		1
Governing Body Total			1
Governor	Elworth CE	No	1
	Elworth CE Total		1
	Offley	No	1
	Offley Total		1
	Sandbach Primary	No	1
	Sandbach Primary Total		1
	Sandbach PS	No	1
	Sandbach PS Total		1
	Wheelock	Yes	2
Wheelock Total		2	
Governor Total			6
Governor & Staff member	Wheelock	Yes	1
	Wheelock Total		1
Governor & Staff member Total			1
Grandparent	Wheelock	No view	1
	Wheelock Total		1
Grandparent Total			1
Local resident	N/A	No	4
		No view	1
	N/A Total		5
Local resident Total			5
Member of School Staff	Elworth Hall	No	1
	Elworth Hall Total		1
	Sandbach Community Primary	No	1
	Sandbach Community Primary Total		1
	Sandbach Primary	No	9
	Sandbach Primary Total		9
	Sandbach PS	No	1
	Sandbach PS Total		1
	St John's	No	1
	St John's Total		1
	The Dingle	No	1
	The Dingle Total		1
	Wheelock	No	1
		Yes	17
	Wheelock Total		18
Unknown	No	1	
Unknown Total		1	
Member of School Staff Total			33
MP	N/A	Yes	1

MP	N/A Total		1
MP Total			1
Other	N/A	No	1
	N/A Total		1
Other Total			1
Parent	Offley	No	82
	Offley Total		82
	Wheelock	No	12
		No view	1
		Yes	19
	Wheelock Total		32
	(blank)	No	1
	(blank) Total		1
	Unknown	No	2
	Unknown Total		2
Parent Total			117
Parent & Governor	Elworth Hall	No	1
	Elworth Hall Total		1
	Offley	No	3
	Offley Total		3
	Offley PS	No	1
	Offley PS Total		1
	The Dingle	No	1
	The Dingle Total		1
	Wheelock	Yes	2
	Wheelock Total		2
	(blank)	No	1
	(blank) Total		1
	Parent & Governor Total		9
Parent & Member of Staff	Offley	No	4
	Offley Total		4
	Wheelock	Yes	3
	Wheelock Total		3
Parent & Member of Staff Total			7
Pupil	Offley	No	2
		No view	1
	Offley Total		3
	Wheelock	No	2
		No view	10
		Yes	72
	Wheelock Total		84
Pupil Total			87
Unknown	Offley	No	1
	Offley Total		1
Unknown Total			1
Grand Total			271

The Governing Body of Offley Primary School (“GBOPS”) sets out below its comments in regard to your proposal for the expansion of Wheelock Primary School (“the proposal”).

GBOPS is of the opinion that:

- i) the consultation process is fundamentally flawed;
- ii) the proposal is unnecessary in the short term, and
- iii) the proposal utilises a level of spend that is unjustifiable at this point in time.

Consultation process

The School Organisation (Prescribed Alterations to Maintained Schools) (England) Regulations 2007 (“TSOR”)

Paragraph 27 of Part 2 of Schedule 5 of TSOR requires that the local education authority must, before they publish any proposals, consult the governing body, teachers and other staff of any other school that may be affected by the proposals together with any other interested party and any other persons whom the authority thinks are appropriate. GBOPS believes that Cheshire East Council (“CEC”) has paid lip service to the consultation process with views of other stakeholders not being sought until the process for the expansion is, to all extent and purposes, a ‘done deal’.

GBOPS understands that proposed drawings for the extension of Wheelock have been provided to parents of pupils at the school and parents have been led to believe that there is certainty that the proposal will go ahead. The Chair of Governors has confirmed that the plans are ready to be submitted. GBOPS considers that this is inappropriate at this stage of the consultation process. Other inconsistencies have been identified in information provided to the Wheelock School Chair of Governors and Headteachers of other Sandbach primary schools.

Essentially, GBOPS and the overwhelming majority of Headteachers of Sandbach primary schools believe they have not had the opportunity to present the impact of the proposals on themselves or to suggest alternative solutions, for example, their capacity to increase PAN, changes to school catchment areas etc.

Paragraph 11 of Part 1 of Schedule 5 of TSOR states that a list of persons who were consulted, minutes of all public consultation meetings and the views of the persons consulted are included in or provided in relation to proposals. Specifically, the requirement for meetings to be minuted has not been fulfilled. GBOPS requested that minutes were taken of meetings held on 30 October 2012 and 9 November 2012 but, in both instances, this was refused.

Equality Impact Assessment (“EIA”)

GBOPS believes that the EIA has not been properly considered for the following reasons:

- a) Headteachers in schools in Sandbach are identified as the main stakeholders in relation to the proposal but they haven’t been sufficiently consulted as noted above;
- b) Inadequate consideration has been given to the potential impact of the proposal on the sustainability of other schools in Sandbach. The proposed significant extension to Wheelock offers four empty teaching bases, increasing the scope for/providing “...flexibility to allow for mid-year entrants”. This allows for inter-school movement leading to possible re-organisations within affected schools resulting in fewer but larger classes, redundancies and a reduction in services, for example SEN;
- c) The EIA states that the proposal will not have any effect on good relations between the Council and the Community and that it will engender a positive reaction from the local community. GBOPS believes that the proposal will have a negative effect on the community because of the sustainability issues set out in (b) above;
- d) Sandbach primary schools currently have a strong working relationship. The proposal will inevitably increase competition between the schools affecting community cohesion, and
- e) The EIA does not expect that any further analysis or intelligence will be required to support decision making. GBOPS and the governing bodies of the other primary schools in Sandbach, with the exception of Wheelock, are of the opinion that the EIA does not reflect the risks to other schools which have been identified through the consultation process. They request that an impact assessment on other schools in Sandbach is carried out.

Draft School Organisation Framework (“Framework”)

The Framework maintains that “The Local Authority recognises that an effective working relationship with schools is an essential prerequisite for discharging its statutory responsibilities in terms of ensuring the provision of school places...” GBOPS is of the opinion that the working relationship between CEC and the overriding majority of the schools in Sandbach has been diminished by the failings of the consultation process.

Short term vs longer term requirements

CEC has indicated that there is a requirement for additional places in Sandbach primary schools for September 2013 however no reliable data has been provided to support this. Should this assumption bear out, other schools in the locality are able to accommodate additional pupils either by utilising surplus places (Elworth Hall, Haslington Primary) or by increasing PANs at schools which wouldn’t need to expand their accommodation immediately (St John’s, Offley Primary). In the latter instance, St John’s could move to a 1FE school and Offley Primary to a 2FE form of entry.

One of the key priorities of CEC set out in the Framework is to provide primary schools with single aged classes wherever possible. Increasing Wheelock from a 1FE school to a 1.5FE school explicitly disregards this policy and GBOPS believes this significantly undermines the CEC's commitment to the Framework.

It has been widely publicised that a number of developers have applied for planning permission to build a significant number of houses in several locations throughout Sandbach. The planning applications are at various stages and the outcomes of them will not all be known within the incredibly short proposal timeframe. It is likely that the proportion of pupils in each catchment will change over the next twelve months and the requirement for places at each of the Sandbach primary schools will need to be reconsidered.

Justification of capital spend

The capital cost of the proposal is not insignificant at £1.8 million. Given the current uncertainty over the extent of the increase in the number of houses in Sandbach over the short to medium term, GBOPS challenges CEC to provide evidence that the proposal caters for the longer term population changes in the area and hence is justifiable.

Summary and recommendation

GBOPS, and the governing bodies of other Sandbach primary schools, firmly believes that the current proposal is premature, short-sighted and ill-considered and that a desk-top, tick-box approach has been taken with regard to the consultation process.

The Sandbach primary schools have met to discuss alternative options. The preferred option is that, in the short term, the September 2013 intake is accommodated within existing classroom space. The consensus of opinion is that the current proposal is put on hold whilst a transparent and open exercise is carried out over the next twelve months, engaging Sandbach primary Headteachers and other education professionals, with regard to 2014 and beyond. Within this timeline there will be greater clarity on the quantum and location of new houses in the area which will allow for a sustainable plan based on full knowledge of relevant facts and information, including up to date census data.

This page is intentionally left blank

Consultation Feedback Form

Proposed Expansion of Wheelock Primary School, Crewe Road, Sandbach

You are invited to comment on Cheshire East Council's proposal to expand Wheelock Primary School from a 210 place, 1 form of entry primary school to a 315 place, 1.5 form of entry primary school for completion in 2013.

Before completing this form, please refer to the consultation document, which provides the rationale for this proposal.

Please tick the relevant boxes to indicate your views and any comments you may wish to make.

Do you support the proposal to expand Wheelock Primary School?	Please tick (✓)		
	Yes	No	No View
	<input type="checkbox"/>	<input checked="" type="checkbox"/>	<input type="checkbox"/>

Comments (if any)

I am not in support of the proposed expansion of Wheelock for a number of reasons which I've listed below.

I am aware of a general response being returned by Chairs of Governors from Sandbach and Haslington Primary Schools, but this response is purely from a school perspective and the possible impact upon St. John's CE Primary School.

Point 1: The Consultation Process

The first point that I would like to raise is with regards to the consultation process, which to me seems to be taking place very quickly, at short notice, with very little regard to the short term impact upon local schools and seems completely flawed and a waste of time as decisions appear to have already been made. I am aware that there have been discussions, feasibility studies and what appears to be well thought out forward planning between the local authority and Wheelock Governors and Headteacher - before the summer break. Even the local authority officers present at recent meetings, Barbara Dale and Rob Hyde, apologised - recognising that the consultation process has been done in completely the wrong way. I feel that this was a tokenistic gesture though as even parents of Wheelock pupils are fully aware of what's going to be happening, not what is being proposed, which strongly suggests to me that decisions have already been made and that it is a done deal! This consultation process is just lip service I feel to tick the boxes. At no point have I nor any other headteachers or governors of local primary schools (as far as I'm aware), been informed or asked our opinions on the Wheelock development prior to the consultation process as we know it now - especially in light of the potential impact upon our schools. My worry for my school is quite simple, should the capacity of Wheelock increase from a PAN of 30 to 45, then I may not fill my own PAN of 25 for September 2013 and potentially could lose children in other year groups to Wheelock, especially if their siblings start in reception next year. Long term, I agree that building developments within our schools will need to take place - but in the short term, the impact of developing Wheelock without full consideration of the potential impacts upon its neighbouring schools could be catastrophic.

Point 2: In year movement of Pupils (year 1 to Year 6) wanting to transfer school

As far as I understand it, if the PAN at Wheelock changes from 30 to 45, then that applies to

every year group - not just the Reception intake for 2013. The school (if 4 classrooms are built) will have the capacity to accommodate up to 45 pupils per year group. However, they won't have the budget or staffing structure to do that. Put simply, if 45 spaces are available per year group, then they can be filled if applications are made. The school will then have to make in year adaptations with how they work- which I know will potentially have a massive effect upon the outstanding provision they currently provide.

If parents wanted to move within the school year and applied for places in year 1 to year 6, the school would have to put forward a very strong case indeed to an appeals panel should they decide that they do not want to admit over 30 due to staffing and class structures and the potential impact upon current pupils. However, if your PAN is 45, then you have to admit 45, irrespective of what current provision and structures a school has in place. A school will have to change how it works in order to accommodate the PAN. I know how this scenario could play out and it's harsh impacts as I have experienced it first hand recently.

This will have a detrimental effect in many ways, not just for my school but for Wheelock as well - especially in light of it being recognised as an outstanding school. I know that I have some parents of pupils in my school who would have gone to Wheelock in the first instance if spaces had been available in the past when they chose reception places, because of location and before/after school provision. If places become available, which they will in every year group if the PAN is increased to 45, then I know that some of my parents will possibly look to move. THIS IS NOT GOOD FOR MY SCHOOL. Nor is it good for Wheelock. This will seriously impact both schools. Parents are more than satisfied with the quality and standard of education at my school and that is not a reason for them wanting to move.

Point 3: Reception Places 2013

One of the key reasons why the Local Authority feel the need to increase the PAN at Wheelock and expand the school building by adding 4 extra classrooms is because of the demand for reception places in Sandbach. The Local Authority increased both Wheelock and Offley PAN's for September 2012 due to the over subscription of places - yet I didn't have a full intake and neither did Elworth Hall. This doesn't make sense to me. The authority are proposing to expand Wheelock as it is projected that demand for reception places will outweigh supply, but yet two schools had surplus places in their reception intake for 2012 when we so called didn't have enough spaces then! The Public Consultation Document produced by Cheshire East Council for the Proposal for the Enlargement of Wheelock Primary School (September 2012) states that:

PAGE 1 - 'For 2012 admissions, the Local Authority and the school (Wheelock) agreed the admission of 45 children to accommodate local children due to an increase in demand for school places in the Sandbach area. The general shortage of places in the Sandbach area for 2012 would have resulted in parents of some children being offered schools over 4 miles away, as the next nearest schools with places available'.

& PAGE 3 'For admission in September 2012, the Local Authority received 212 (applications for the 6 Sandbach town primary schools. This exceeded the 185 reception class places available in the area'.

These statements are flawed as my school had a space (we admitted 24 in relation to our PAN of 25 but yet we could have admitted up to 30 if we had been approached by the local authority - which we never were). I also know that Elworth Hall also didn't have a full PAN and as far as I know - both schools are much less than 4 miles away from Wheelock. So if that information is wrong, it leads me to not trust the data being put out there for the 2013 reception intake. Why did the Local Authority not speak to us at St. John's if so many extra spaces were required?

If I do not get a full intake of 25 pupils, then I will have to look at my budget as to where I can make savings. If we get below 20, then I will have to make staffing cuts, either in hours or redundancies. My budget is that precariously balanced just like most other schools.

At recent consultation meetings held on the 30th October at Westfields and 9th November at Offley Primary School, I asked a simple question to Barbara Dale, to seek assurances with regards to getting a full intake of 25 pupils in our reception class for September 2013. Her

reply was that the Local Authority can not give any assurances that we will have a full intake of 25 pupils for Reception 2013 as it is parental choice. So if Wheelock fill their potential 45 places and we don't fill the 25, where is the logic in that. And if projected data is to be taken as the evidence that all school places will be filled in Sandbach and Haslington, then I have no confidence whatsoever as was proved by the admissions process for 2012 when both my school and Elworth Hall did not have full intakes despite their being 212 applications for the 6 Sandbach Primary Schools for the 185 places available.

Point 4: Current Capacity at St. John's CE Primary School.

At no point have I nor my governing body been approached by any members of the Local Authority who have been involved with the expansion of Wheelock Project. I find this strange considering the research, desktop exercises and feasibility studies which have been undertaken with the potential spend of £1.765 million. St. John's currently has a PAN of 25. We have not had full intakes for several years, for the main reason that in 2008 the school was placed in special measures. During the 18 months that the school was in a category, it lost almost a third of it's pupil numbers, falling from 163 in 2007 to 111 in September 2009. When I started here at St. John's, I had to make staffing redundancies and restructure the whole school due to the impact of pupil losses. However, the school came out of special measures in June 2009 and in June 2011 was inspected again with a good grading, with outstanding recognition in our reception class.

However, despite having a stability now in our school, we have fluctuating numbers from reception to our current year 6. Rec:24, Yr.1:18, Yr.2:26, Yr.3:17, Yr.4:14, Yr.5:13, Yr.6:23. Total pupils 135. These pupils are spread over 5 classes, which we have to change the structure of each year until we reach capacity.

Based on our current PAN of 25, we have 40 spaces across the primary phase in our school alone. That is almost 50% of the forecasted spare places as identified in the Public Consultation Document on page 3. So should there be any need to fill places from in year movement, then we can accommodate them.

However, we would like to increase our PAN to 30. The reason we have not yet done so is because we have not yet filled an intake of 25 in the three years that I've been here to date. St. John's is its own admission authority and we can increase our PAN if we choose to do so. Ideally, we would like to have a 1FE school as it makes the whole organisation, structure and management of a school much easier than having mixed year groups. If we increased our PAN to 30, that would give us an additional 35 spaces across the school, taking our potential capacity from 175 to 210. That would mean that based on current numbers, we would have potentially 75 available spaces across the primary phase from September 2013. I appreciate that in the long term, with potential housing developments across the town taking place, school building developments will have to take place. However, in the short term, for September 2013, we can admit up to 30 pupils in our reception class if requested by the Local Authority. At the recent meeting held on the 9th November at Offley Primary School, Ken White did acknowledge that St. John's CE Primary School can accommodate 7 classes, each with 30 pupils at potentially no extra costs. However, ideally we would look to either add on an extra classroom or provide extra learning space & a new staff room - but we would be open to ideas and discussions. The costs would be no where near as significant as Wheelock I feel. There are solutions available across the town in the short term (for September 2013) which if utilised, would give the long term planning for school development more opportunity to get it right.

Point 5: Current reasons why parents choose not to come to St. John's CE Primary School.

Although parents rate our school highly in terms of the quality of education we can provide, they choose not to come to St. John's for 2 key reasons.

The first reason is because we are not a through road and parents do not pass our school on their way to work, where as they do with Sandbach, Offley and Wheelock.

And secondly, St. John's does not offer before and after school provision. I have looked into this extensively and it is not economically possible for us to run such a club. The main reason is because we do not have a sufficient enough demand from our current parents to fund such wraparound care. Outside providers have been approached, but do not see it as a sound business opportunity for them due to the lack of demand. I appreciate the fact that if I invest in the service then it will attract new parents, but unfortunately with the school budget

the way it is and the future funding outlook looking extremely bleak, it would be very bad value for money and would take away Teaching Assistant roles within my school, which are more important.

In Summary:

My concerns are:

1) The potential short impact of expanding Wheelock from a PAN of 30 to 45 from Sept 2013 may result in St. John's NOT having a full intake of its PAN of 25. No assurances can be given to me.

2) The potential impact of in year movement of pupils away from St. Johns (from year 1 to year 6) to Wheelock Primary because the PAN for all year groups will be 45. I do know that I could lose several potential parents and their children due to:-

Wheelock being closer to them (they didn't get in there when they originally applied for reception places);

If younger siblings of older pupils currently at St. Johns start in Reception at Wheelock in September 2013, parents will look to move the elder siblings also;

Wheelock being able to offer before/after school childcare provision;

Wheelock being a more accessible school for parents to take their children to, especially if parents work in Crewe or Nantwich.

3) That the process has not been thought out and the long term solutions resemble more of a quick fix solution. I am not a legal expert, but I feel that errors have been made in the consultation process as otherwise apologies would not have been made by senior Local Authority officers leading the project for the 'lack of communication and consultation'.

My suggestions:

Although long term, I am in agreement with looking to develop school provision within the Sandbach locality, especially in light of the proposed building developments across the whole town including here on Sandbach Heath, I believe that a thoughtful, well planned and considered approach needs to be applied. It may turn out to be that the expansion of Wheelock is the RIGHT option, but all options and scenarios need to be considered first, which hasn't happened. I believe that a full risk assessment of the short term impact upon Wheelock's neighbouring schools has not been undertaken or considered. Spending almost £1.8 million should not be taken lightly and all thoughts, opinions and options need to be considered carefully - and that can not be achieved (in my opinion) in the remaining few months before building is scheduled to take place in the spring to ensure that building is completed for September 2013.

In the short term, St. John's can:

Increase it's PAN from 25 to 30 to help accommodate any surplus applications for September 2013. This is achievable within my school at NO EXTRA COSTS.

Long term, we can also look to operate a 1FE school, with a PAN of 30, but would want to discuss with the Local Authority additional space, even though on paper we can accommodate a 1FE intake NOW at no extra costs. We could, but it would be difficult to provide a standard of education which we currently deliver now.

	Please Tick (✓)
Parent/Carer of Present Pupil(s)	<input type="checkbox"/>
Governor	<input type="checkbox"/>
Member of School Staff	<input checked="" type="checkbox"/>
Pupil	<input type="checkbox"/>
Other (please specify)	

Name:Mr Rob Whittle	Date:20/11/2012
Address:St. Johns CE Primary School, Sandbach	Signed: R D WHittle

Please return this form to:

Cheshire East Council, School Organisation and Capital Strategy, Delamere House, Delamere Street, Crewe CW1 2LL **by the closing date of 23 November 2012.**

This page is intentionally left blank

Consultation Feedback Form

Proposed Expansion of Wheelock Primary School, Crewe Road, Sandbach

You are invited to comment on Cheshire East Council's proposal to expand Wheelock Primary School from a 210 place, 1 form of entry primary school to a 315 place, 1.5 form of entry primary school for completion in 2013.

Before completing this form, please refer to the consultation document, which provides the rationale for this proposal.

Please tick the relevant boxes to indicate your views and any comments you may wish to make.

Do you support the proposal to expand Wheelock Primary School?	Please tick (✓)		
	Yes	No	No View
	<input type="checkbox"/>	<input checked="" type="checkbox"/>	<input type="checkbox"/>

Comments (if any)

The consultation process for this proposal did not fully consult with key stakeholders before going to consultation therefore creating a proposal that is flawed in terms of the impact it will have in the short and the long term on all children's education in the Sandbach and Haslington school community. Local headteachers are identified in the Equality Impact Assessment as key stakeholders but have not been party to any consultation until invited to a meeting on 30th October by which time a confidentially conducted feasibility study had been fully completed, the project had gone out to tender, planning permission is soon to be submitted and parents and staff at Wheelock Primary are announcing to the local community that the expansion is happening from September 2013. At the consultation meeting with officers for local headteachers and Chairs of Governors on 30th October 2012 no minutes were taken by officers even though this had been questioned by those invited at the start of the meeting. I do not believe that views can be fully and accurately represented without minutes to record the discussions of all parties. Overall I believe the consultation process has not met the fair and high standards we expect of Cheshire East.

The proposal creates a school that will in the future will be 1.5 form entry. This proposal contradicts the council's own school organisation plan, recently consulted on, to create in the future whole form entry schools. This proposal will in fact reduce the number of whole form entry schools in Sandbach and Haslington in the future, leaving only one of the eight schools organised as a whole form entry school. If feasibility studies had extended initially to the other schools there are solutions to the current need to increase the number of places across the area which will also create a greater number of schools with whole form entry PANs. This in the long term would create schools which can deliver a coherent and progressive curriculum more effectively and therefore secure higher standards. Whilst the officers argue Wheelock is a popular school the impact of creating a 1.5 entry school with mixed age classes will possibly contribute to making the school less popular because of the new mixed age characteristic being created.

In the short term the building of four classrooms at Wheelock would give an immediate solution that matches the number of places required for reception applications in Sandbach and Haslington and particularly the Wheelock area. However the creation of classrooms for future year groups by September 2013 will immediately increase the number of surplus places for other year groups on completion of the project. No guarantee can be given by the

LA that admissions to the new build will be restricted to entry at reception only. The overall surplus created would for a number of years be above the level of surplus places at which the LA has indicated in its School Organisation Plan that it wishes to operate at. Whilst surplus places allow for parental choice within the locality and for families moving into the area it will be at a level which will impact directly on the numbers on roll in other schools locally because a critical number of pupils will be able to transfer from other schools from year groups other than reception which local headteachers have informed officers will impact hugely on their schools' organisation, curriculum delivery and staffing. The advantage for one school, Wheelock, should not create disadvantage for other schools.

I question why feasibility studies were not carried out on at least two other schools locally in order to ensure the predicted shortfall of places over the next five academic years is resolved with a long term Best Value solution to ensure education for all children in Sandbach and Haslington is planned effectively for the future. Elworth CE is a popular school and closer to some of the families who historically have been in the Wheelock catchment which has grown due to housing development in Ettiley Heath. I understand pupils from the growing Ettiley Heath, part of the historic catchment area, are transported by bus to Wheelock Primary and therefore continued inclusion in the Wheelock catchment would require increased transport which would have an environmental impact. Offley Primary is also a popular school who temporarily increased its PAN in 2012 at the LA's request. This school has a large site with spacious premises due to its reduction to a 45 PAN as an outcome of TLC a few years ago. It would be easier and more cost effective to increase this school to a 60 PAN again and as they are still rolling through the new pre TLC 60 PAN this would not have such an impact on the movement of pupils from other schools from other year groups as the overall number of surplus places across the local area would not be as significantly increased until the complete roll through of the new 45 PAN at Wheelock would be.

In discussions between officers and headteachers at the second consultation meeting arranged for headteachers and Chairs of Governors on 9th November a number of headteachers of the Sandbach and Haslington schools indicated higher current numbers of surplus places than the officers indicated they were aware of. I would urge the officers to look carefully at actual number of surplus and required places using actual figures available from schools rather than just relying on the desktop exercise they told us had informed the proposal. Only a few years ago my own school and another in the locality reduced our PANs as the outcome of TLC and we are now seeing that the solution agreed then was perhaps misinformed by data predictions.

I fully understand the current lack of school places across Sandbach and the predictions being made due to the actual and likely future housing developments in the area. However, I do not see the current proposal to increase Wheelock as the long term solution to getting education provision right to meet need and parental choice in the area. I would also add that the Equality Impact Assessment is not accurate as;

1. The current proposal is not benefitting all young people and their parents and carers in the Sandbach area.
2. Key identified stakeholders have not been sufficiently consulted early enough for their input to be fully taken into account.
3. The proposal will not positively impact on the number of school places for primary age children as the increase will have a negative impact on children in other schools if their numbers on roll drop significantly over the next few years due to this proposal.
4. No risk assessments have been carried out on the impact of the proposals on other individual local schools.
5. The proposal will not necessarily have a marginally positive impact on young people and parents with a disability because the provision of additional places will overall provide sufficient places closer to person's place of residence as some of the catchment for Wheelock is actually closer to another school.
6. Pupils from socio-economic disadvantaged groups in other schools in the area may be affected by the proposal because of the destabilisation the proposal will cause to the other schools.
7. The assessment considers the impact on community cohesion as neutral and evidence from the current concerns being raised by headteachers and governors over the way this proposal has been developed is already impacting negatively on the community cohesion

between the schools.

8. The proposal and its consultation process is not engendering a positive reaction from the wider local community and is not supporting good relationships between the wider school community and the Council.

9. Further local intelligence and data gathering is required before the end of the consultation period as illustrated in our discussions with officers at meeting on 30.10.12 and 9.11.12.

Thanking you in anticipation for your full consideration of my comments.

Please tick the following box(s) to indicate any of the following that apply to you:

	Please Tick (✓)
Parent/Carer of Present Pupil(s)	<input type="checkbox"/>
Governor	<input type="checkbox"/>
Member of School Staff	<input checked="" type="checkbox"/>
Pupil	<input type="checkbox"/>
Other (please specify)	

Name:Lynn Treadway	Date:19.11.12
Address:Sandbach Community Primary, Crewe Sandbach CW11 4NS	Signed:Lynn Treadway

Please return this form to:

Cheshire East Council, School Organisation and Capital Strategy, Delamere House, Delamere Street, Crewe CW1 2LL **by the closing date of 23 November 2012.**

This page is intentionally left blank

Pupil Distribution Maps – Sandbach Primary Schools



ELWORTH HALL.pdf



OFFLEY PRIMARY
SCHOOL.pdf



ELWORTH CofE.pdf



HASLINGTON
PRIMARY.pdf



SANDBACH
SCHOOL.pdf



ST JOHN'S CE.pdf



THE DINGLE.pdf



WHEELLOCK.pdf

This page is intentionally left blank

Equality impact assessment is a legal requirement for all strategies, plans, functions, policies, procedures and services under the Equalities Act 2010. We are also legally required to publish assessments.

Section 1: Description

Department	Children , Families and Adults		Lead officer responsible for assessment		Rob Hyde	
Service	School Organisation		Other members of team undertaking assessment		Barbara Dale	
Date	30 November 2012		Version		2	
Type of document (mark as appropriate)	Strategy	Plan √	Function	Policy √	Procedure	Service
Is this a new/existing/revision of an existing document (mark as appropriate)	New		Existing		Revision √	
<p>Title and subject of the impact assessment (include a brief description of the aims, outcomes , operational issues as appropriate and how it fits in with the wider aims of the organisation)</p> <p>Please attach a copy of the strategy/plan/function/policy/procedure/service</p>	<p>Permission to publish a statutory notice on the proposed expansion of Wheelock CE Primary from 1FE to 1.5FE to provide an additional 105 school places with a proposed completion date of September 2013.</p> <p>There are any other associated policies and procedures as set out below:-</p> <ul style="list-style-type: none"> Children and Families, Capital Strategy 2012/2013 Statutory consultation has been undertaken on this proposal as the changes, if approved, will fall within the category of a significant enlargement as the additional accommodation proposed for Wheelock Primary would increase the capacity by more than 30 pupils and by more than 25%. The Local Authority must comply with statutory requirements as set out in The Education and Inspections Act 2006 (EIA 2006) and The School Organisation (Prescribed Alterations to Maintained Schools)(England) Regulations 2007 (as amended by The School Organisation and Governance (Amendment)(England) Regulations 2007 which came into force on 21 January 2008 and The School Organisation and Governance (Amendment)(England) Regulations 2009 which came into force on 1 					

September 2009).

The aims, objectives and outcomes of this proposed change are as follows:-

The proposal, if determined, will provide additional primary school places for the Wheelock area of Sandbach to address the forecast shortfall for this area. In addition, this will deliver a level of operational surplus for the Local Authority, which is a level of spare capacity intended to accommodate reasonable journey times to school, some degree of parental choice, and flexibility to allow for mid-year entrants. The proposal will therefore have a significant positive impact on the current projected shortfall in the number of school places in Sandbach and on parental choice and, at worst, a neutral impact on vulnerable and minority groups in the community.

The outcomes of consultation have been summarised in a report to the Portfolio Holder for a decision on 3 December 2012. In deciding whether or not to give permission to publish proposals it is a requirement both under DfE guidance and case law that the decision maker should consider the views expressed during consultation and take into account the Equality Impact Assessment. It is therefore imperative that full details of all views submitted are made available at the decision meeting.

Wheelock Primary School is a popular and successful school with a published admission number (PAN) of 30 pupil places and overall accommodation for 210 pupils across the 7 year groups. The Local Authority is proposing an increase to provide 315 pupil places with a proposed implementation date of September 2013. This increase, if approved, will provide sufficient accommodation for an intake at the normal point of entry to the school (the reception class) of 45 pupils with the school operating in the longer term as a 1.5 form of entry primary school as the relevant year group moves through the school.

Wheelock Primary is situated in the Sandbach area of the Congleton Local Area Partnership. Sandbach has 8 primary schools and 2 secondary schools. Two of these primary schools fall within the Crewe Local Area Partnership and serve the Haslington area (Haslington Primary and The Dingle Primary schools). The total capacity across the 8 primary schools is currently 1915 pupil places. Forecasts indicate that there will be a shortfall of 151 pupil places by 2017, taking into account all 8 primary schools.

	The 6 primary schools located in the Sandbach town area (excluding the two Haslington primary schools) have a combined capacity of 1295 school places. Pupil forecasts for these 6 schools indicate that by 2017 there will be an overall shortfall in the number of pupil places by 11% (144). The number of spare pupil places is forecast to fall to 0% in September 2013.
Who are the main stakeholders? (eg general public, employees, Councillors, partners, specific audiences)	<ul style="list-style-type: none"> • Children and their parents and carers • Headteachers in schools in Sandbach

Section 2: Initial screening

Who is affected? (This may or may not include the stakeholders listed above)	Children and Young People Parents / Carers Schools
Who is intended to benefit and how?	Young Children and their parents and carers in the Sandbach area and in particular, families resident in the area normally served by Wheelock Primary.
Could there be a different impact or outcome for some groups?	This proposal will have a marginal positive impact for members of the local community.
Does it include making decisions based on individual characteristics, needs or circumstances?	Any decision on the proposal will not be based on any individual characteristics, needs or circumstances
Are relations between different groups or communities likely to be affected? (eg will it favour one particular group or deny opportunities for others?)	A number of concerns have been expressed during the statutory consultation process that this proposal will have a detrimental impact on nearby schools by increasing the capacity in the area by an additional 105 primary school places across all year groups, with an increased intake at the normal point of entry of 15 additional pupils. Concern has been raised that whilst the expectation is that the additional places will be phased in at the normal point of entry

to the school, the additional accommodation that would need to be provided would undermine the admission authority's ability to justify prejudice at appeal, should an unsuccessful applicant challenge a decision to refuse admission.

Whilst the decision of an independent appeal panel cannot be pre-empted, the view of the admission authority is that there would be prejudice to the provision of efficient education and efficient use of resources if the school was expected to take into the school 105 extra pupils on implementation. Phasing in of the accommodation is essential to ensure appropriate pupil teacher ratios and to mitigate any risk to existing pupils and to the school's ability to set a balanced budget, for which there would be a negative impact if new accommodation was utilised immediately. The purpose of this proposal is to provide sufficient places in the area to meet growing demand and not to have a detrimental impact on nearby schools.

The Local Authority in making this recommendation for expansion has taken into account pupils forecasts which indicate that there will be an insufficient number of pupil places for Sandbach residents in the future, taking into account the January 2012 School census data. Forecasts indicate that there will be a shortfall across all year groups and all schools from 2013.

Further analysis of October 2012 data shows that the pressure on places in these schools is predominantly in Key stage 1 with a shortfall of 32 places in the reception cohort for 2012 and an overall shortfall of 9 places across KS1. This is compared with 82 spare pupil places across KS2. Excluding the two Haslington primary schools, the pressure on places in the Sandbach area is greater with a KS 1 having an overall shortfall of 15 places and only 40 pupils places in KS2. This more recent change in the demand for places in the area must be addressed to ensure that the LA can meet its statutory duty of providing sufficient school places for children in its area.

In addition, analysis of reception intakes has been undertaken and this indicates that the number of children in the combined catchment areas for September 2012 and 2013 exceed the total number of reception class places in the area, which must be addressed. Including Haslington, there are 275 pupil places for which there were 283 resident pupils for 2012 and currently 253 for 2013. Excluding Haslington, there are 185 pupil places and 221 resident pupils 2012, and to date, 204 for 2013. Both years therefore exceeding the number of pupil places.

	<p>In making this recommendation the Local Authority has given consideration to a number of issues, including the number of pupils in each school's catchment area, the number of first preferences received for each school, the current size of the school together with the school sites and those suitable for expansion and the likely costs of extension. Suitable schools also needed to be central to the area where the extra places are required.</p> <p>The process of formulating options for consideration included consideration of the Council's priorities as set out in the draft School Organisation Framework. Due to the timescales involved, informal (non-statutory) consultation procedures were not implemented prior to formal statutory consultation. Feedback on the proposal has nevertheless been facilitated during the formal consultation period and meetings arranged with groups of schools provided in depth discussion with attendees.</p> <p>On 30 October at the start of the consultation process, a meeting was held attended by headteachers and governor representatives of the Sandbach primary schools to provide information about the proposed expansion of Wheelock Primary and the rationale for change including forecast demand and the process for change. The meeting was well attended. Attendees acknowledged the pressures for the area but expressed objection to the Wheelock proposal. Concern was expressed that informal consultation procedures had not been implemented allowing schools in the area the opportunity to be part of the process of identifying options for change and that the proposal for 105 places had the potential to impact on other Sandbach schools if additional capacity is in place for September 2013 as proposed. Additional comments were made regarding alternative solutions that attendees at the meeting considered more appropriate for the area. It was agreed at the meeting that a further meeting would be arranged during consultation to facilitate feedback on alternative solutions for the town.</p> <p>On 9 November a further meeting took place and this was well attended. The issues raised at the meeting include procedure: which was questioned in relation to the undertaking of equality impact assessments, data, timing of proposals and the potential impact on other schools and consultation timescales, with recommendations in relation to the latter that the 5 weeks is insufficient .</p>
<p>Is there any specific targeted action to promote equality? Is there a history of unequal outcomes (do you have enough</p>	<p>Consultation has been undertaken over a 5 week period inviting feedback on the proposals from anyone with an interest.</p>

evidence to prove otherwise)?											
Is there an actual or potential negative impact on these specific characteristics? (Please tick)											
Age	Y	N ✓	Marriage & civil partnership	Y	N ✓	Religion & belief	Y	N ✓	Carers		N
Disability	Y	N ✓	Pregnancy & maternity	Y	N ✓	Sex	Y	N ✓	Socio-economic status		N
Gender reassignment	Y	N ✓	Race	Y	N ✓	Sexual orientation	Y	N ✓			
What evidence do you have to support your findings? (quantitative and qualitative) Please provide additional information that you wish to include as appendices to this document, i.e., graphs, tables, charts									Consultation/involvement carried out		
									Yes	No	
Age	This will positively impact on the number of school places for young people of primary school age in the Sandbach area and thereby increasing opportunities for parental choice, in line with DfE guidance.					✓					
Disability	The proposal will have a marginally positive impact on young people and parents with a disability because the provision of additional places will overall provide sufficient places closer to person's place of residence. The proposal will also offer greater parental choice for those families with wider caring responsibilities for household members with a disability.					✓					
Gender reassignment	The Local Authority is bound by the Admissions Code and Regulations and this does not allow for any discrimination in this respect. However, given the very young age of the pupils it is unlikely that any issues					✓					

	will arise in relation to these protected characteristics.		
Marriage & civil partnership	<p>The Local Authority is bound by the Admissions Code and Regulations and this does not allow for any discrimination in this respect.</p> <p>Admissions to the school are made following the local authorities admission arrangements and over subscription criteria. All applications are considered against the over subscription criteria on a equal basis without reference to the marital status of the parent/carer.</p>	v	
Pregnancy & maternity	<p>The Local Authority is bound by the Admissions Code and Regulations and this does not allow for any discrimination in this respect.</p> <p>Admissions to the school are made following the local authorities admission arrangements and over subscription criteria. All applications are considered against the over subscription criteria on a equal basis without reference to the status of the parent/carer</p>	v	
Race	<p>The Local Authority is bound by the Admissions Code and Regulations and this does not allow for any discrimination in this respect.</p> <p>Race is recorded as the following from Wheelock school:</p> <ul style="list-style-type: none"> • 97% White • 2% Mixed/Dual Background • 0.5% Asian or Asian British • 0.5% Other Groups or Not recorded 	v	

	<p>The average recorded data across the Sandbach primary is:</p> <ul style="list-style-type: none"> • 94% White • 2 % Mixed/Dual Background • 1% Asian or Asian British • 0% Black or Black British • 3% Other Groups or Not recorded <p>The local authority has no reason to believe that any proposed expansion of the school would result in an overall change to the current demographics.</p>		
Religion & belief	The Local Authority is bound by the Admissions Code and Regulations and this does not allow for any discrimination in this respect. Wheelock Primary School is a community school and as such admission applications are considered against the admission arrangements and over subscription criteria as determined by the local authority. The over subscription criteria are applicable to all applications on an equal basis irrespective of religious belief.	✓	
Sex	There is an equal gender balance girls and boys currently attending Wheelock Primary, Girls represent 49% of the Wheelock pupils with boys 51%. This represents a similar school population demographic across Sandbach schools with 49% male and 51% female.	✓	
Sexual orientation	The Local Authority is bound by the Admissions Code and Regulations and this does not allow for any discrimination in this respect. However, given the very young age of the pupils it is unlikely that any issues will arise in relation to these protected characteristics.	✓	
Carers	The proposal will have a marginally positive impact on persons with dependents and will offer greater parental choice for those families with wider caring responsibilities.	✓	
Socio-economic status	It is considered that the proposal will have a positive impact on those children/young people included in this group as the proposal, if agreed, will	✓	

	provide more places locally for local families.		
Proceed to full impact assessment? (Please tick)	Yes	No ✓	Date 30.11.2012

If yes, please proceed to Section 3. If no, please publish the initial screening as part of the suite of documents relating to this issue

Section 3: Identifying impacts and evidence

This section identifies if there are impacts on equality, diversity and cohesion, what evidence there is to support the conclusion and what further action is needed

Protected characteristics	Is the policy (function etc....) likely to have an adverse impact on any of the groups? Please include evidence (qualitative & quantitative) and consultations	Are there any positive impacts of the policy (function etc....) on any of the groups? Please include evidence (qualitative & quantitative) and consultations	Please rate the impact taking into account any measures already in place to reduce the impacts identified High: Significant potential impact; history of complaints; no mitigating measures in place; need for consultation Medium: Some potential impact; some mitigating measures in place, lack of evidence to show effectiveness of measures Low: Little/no identified impacts; heavily legislation-led; limited public facing aspect	Further action (only an outline needs to be included here. A full action plan can be included at Section 4)
Age				
Disability				
Gender reassignment				
Marriage & civil partnership				

Pregnancy and maternity				
Race				
Religion & belief				
Sex				
Sexual orientation				
Carers				
Socio-economics				
Is this project due to be carried out wholly or partly by contractors? If yes, please indicate how you have ensured that the partner organisation complies with equality legislation (e.g. tendering, awards process, contract, monitoring and performance measures)				

Section 4: Review and conclusion

Summary: provide a brief overview including impact, changes, improvement, any gaps in evidence and additional data that is needed			
Specific actions to be taken to reduce, justify or remove any adverse impacts	How will this be monitored?	Officer responsible	Target date
Continue to engage with the Sandbach Partnership Primary Headteachers to discuss their concerns regarding perceived negative impacts. And in the event that the proposed changes are implemented ttp work with schools to ensure that any impact is minimised.	<ul style="list-style-type: none">Monitor in year applications between Sandbach Primary Schools , liaise with Sandbach schools as necessary	Rob Hyde/ Barbara Dale	Ongoing for a period of at least 12 months following completion of the building project.
Please provide details and link to full action plan for actions			
When will this assessment be reviewed?			
Are there any additional assessments that need to be undertaken in relation to this assessment?	Further analysis to asses impact will be conducted over the coming weeks and an updated EIA will be presented to the Final Decision maker at the end of the Representation period, if approved. Further analysis and data to be provided for the following characteristics :- Disability and Socio – economics		

Lead officer signoff		Date	
Head of service signoff		Date	

Please publish this completed EIA form on your website

This page is intentionally left blank

CHESHIRE EAST COUNCIL

Cabinet Member for Children and Family Services

Date of Meeting: 17th December 2012
Report of: Heritage and Design Manager
Subject/Title: Nantwich Conservation Area Character Appraisal
Portfolio Holder: Councillor Rachel Bailey

1.0 Report Summary

- 1.1 The Nantwich Conservation Area Character Appraisal and Review was adopted by the Development Control Committee of the former Crewe & Nantwich Borough Council on 2nd May 2006. The committee resolved that five of the thirteen proposals within the approved document should be identified as “initial draft proposals” until further consultation with key groups had taken place. It is now complete and the five proposals are submitted for approval.
- 1.2 The five initial draft proposals were:
- Proposal 1 – extension of the conservation area boundary;
 - Proposal 3 – identification of properties for consideration as additions to the Council’s list of locally important buildings;
 - Proposal 5 – identification of properties for consideration for inclusion within an article 4 (ii) direction area;
 - Proposal 7 – identification of properties for consideration for inclusion within an area of special advertisement control;
 - Proposal 9 – identification of areas for consideration for the preparation of development briefs for improvement/enhancement.
- 1.3 Consultation subsequently took place with the key groups identified within the 2006 report:
- Nantwich Town Council;
 - Nantwich Civic Society;
 - Nantwich Now Market Town Project.
- 1.4 Consultations were however protracted due to personal circumstances pertaining to members of one of the key groups and local government reorganisation. All matters have now been concluded so that it is possible to bring this report forward.
- 1.5 The comments contained in the final responses received from the three groups on these five proposals are summarised in **Appendix 1** to this report, together with officer recommendations.

2.0 Recommendations

- 2.1 That approval be given for the amendment to the initial draft proposals as presented in **Appendix 1** and their incorporation within the final Nantwich Conservation Area Character Appraisal & Management Strategy.
- 2.2 That the formal procedures and notices to amend the conservation area boundaries be undertaken, including notifying all property owners, land charges and Geographic Information System.
- 2.3 That key groups be sent a letter to thank them for their participation and to advise them of the changes being made.
- 2.4 That the appraisal be updated to record initiatives and developments which have taken place since the appraisal was adopted on 2nd May 2006 such as those noted in **paragraphs 10.9 and 10.10** of this report.

3.0 Reason for Recommendation

- 3.1 To complete the formal adoption of all the proposals in the Nantwich Conservation Area Character Appraisal and their incorporation within an integral Management Strategy in accordance with the latest guidance produced by English Heritage during and the consultation period in 2005/6 and subsequently.

4.0 Wards Affected

- 4.1 Nantwich North and West and Nantwich South and Stapeley.

5.0 Local Ward Members

- 5.1 Councillor Penny Butterill, Councillor Arthur Moran, Councillor Peter Groves and Councillor Andrew Martin.

6.0 Policy Implications including climate change and health

- 6.1 This appraisal does not include any policy implications for climate change and health.

7.0 Financial Implications (Authorised by Borough Treasurer)

- 7.1 The costs of notification attached to the adoption of the proposals in the appraisal will be met within the 2012/13 budget for Development Management.

8.0 Legal Implications Authorised by the Borough Solicitor

- 8.1 Section 69 of the Planning (Listed Buildings and Conservation Areas)

Act 1990 places an obligation on local authorities to determine which parts of their area are areas of special architectural and historic interest, the character and appearance of which it is desirable to preserve and enhance and to designate those areas as conservation areas, and to register the designation as a land charge.

- 8.2 Section 70 of the Planning (Listed Buildings and Conservation Areas) Act 1990 requires the local authority to notify the Secretary of State and English Heritage of the designation, and to advertise the designation in the London Gazette and a local newspaper in the area.
- 8.3 Section 71 of the Planning (Listed Buildings and Conservation Areas) Act 1990 places a duty on the local planning authority from time to time to formulate and publish proposals for the preservation and enhancement of any parts of their area which are conservation areas, submit them for consideration to the public in the area to which they relate and have regard to the views concerning the proposals expressed.
- 8.4 Pursuant to the Local Government Act 2000 s13 and the Local Authorities (Functions & Responsibilities) (England) Regulations 2000, decisions relating to the designation of conservation areas belong to the Executive and have been delegated, by the Council's Constitution, to the Portfolio Holder.

9.0 Risk Management

- 9.1 Statutory requirements for the appraisal and its proposals have been met.

10.0 Background and Options

- 10.1 Local authorities have a responsibility to determine which parts of their area are considered to be of architectural and historic interest, the character and appearance of which it would be desirable to preserve or enhance, and to designate such areas as Conservation Areas.
- 10.2 Conservation Area Appraisals are the established best practice for identifying their merit for conservation area status and the need to formulate proposals to preserve and enhance their character and appearance, involving public consultation.
- 10.3 Management Strategies explain how the current legislative framework nationally and locally seeks to preserve and enhance the character and appearance of conservation areas, identify how the proposals within an appraisal will be implemented and include a timetable for their delivery based on a programme of short, medium and long term projects.

- 10.4 The Nantwich Conservation Area Character Appraisal & Management Strategy will integrate these approaches and is to be based on the existing Nantwich Conservation Area Character Appraisal & Review.
- 10.5 The steps leading up to the adoption of the Nantwich Appraisal & Review which was adopted with five of its proposals identified as initial draft proposals on 2nd May 2006 are set out in **Appendix 4** to this report. A copy of the adopted appraisal and review document is now available on the Council's web site by clicking on the Nantwich entry shown on the second page of the following link:
http://www.cheshireeast.gov.uk/environment_and_planning/heritage_natural_environment/conservation/conservation_areas/conservation_areas_appraisals.aspx
- 10.6 The final consultation responses received from the three key groups on the five initial draft proposals in the Nantwich Appraisal & Review were generally supportive but identified additional areas be considered for inclusion within: the conservation area boundary and the proposed Article 4 (ii) Direction Area, Area of Special Advertisement Control and the areas identified as being in need of improvement or enhancement. They also identified additional buildings and structures which might be considered for inclusion within the proposed Local List.
- 10.7 Details of the consultation responses received from the key groups on these five proposals and officer comments and recommendations on each are set out in **Appendix 1** of this report, supported by **Map 1** together with **Appendix 2** (additional submission relating to Local List, Proposal 3) **Appendix 3** (additional submission relating to Areas in Need of Improvement, Proposal 9) of this report.
- 10.8 The recommended changes to the five initial draft proposals are:

- **Proposal 1 Boundary**

Extend the boundary of the conservation area to include areas which lie within the recognised historic core of the town which is based on the 1851 Jas Fenna Map. As shown in **Map 1** of this report (2006 proposed extensions and part of area 10 recommended in 2012), but not to include areas outside that recognised historic core nor a greater extent of its waterside setting at Waterlode which lies beyond the visual extent of the conservation area. As shown in **Map 1 (areas 1-10)** of this report.

That the boundary should not be extended to include the full extent of the rear plots of the old historic core of the town, as it is already drawn to reflect these wherever possible, with existing rear property boundaries used in cases where the historic rear boundary is not clear on the ground, following accepted best practise nationally.

That the appraisal should include a copy of the 1851 Jas Fenna Map and text to assist in understanding the basis of the conservation area

boundary. English Heritage and Nantwich Civic Society have both indicated that they now recognise and support the basis of this demarcation.

That work needs to be carried out in some places to correct inaccuracies occurring in recent years through the use of computer based mapping of existing rear property boundaries;

- **Proposal 3 List of Locally Important Buildings**

Add the properties put forward by the key groups, as identified in **Appendix 2** to this report, to those already identified in Appendix 4 of the 2006 Appraisal & Review, as being buildings which make a positive contribution to the conservation area, to ensure that their value is taken into account when considering applications for their demolition, alteration or extension, and, identify the fact that their inclusion within an Article 4 Direction will be given priority in the timetable within the Management Strategy. This will provide the buildings with more rigorous protection than would be afforded by their inclusion within a local list, which is in accordance with guidance produced by English Heritage.

- **Proposal 5 Article 4 (ii) Direction Order**

Add the properties put forward by the key groups, as identified in **Appendix 1** to this report, to those to be considered for inclusion within an Article 4 (ii) Direction Area as part of the planned work to be undertaken on this proposal within the time slot which is to be identified in the Management Strategy, ensuring their inclusion can be justified in accordance with national criteria for selection so the additional controls imposed will be effective and enforceable and supported by the community and their owners.

- **Proposal 7 Area of Special Advertisement Control**

Add the properties put forward by key groups, as identified in **Appendix 1** to this report, to those to be considered for inclusion within an Area of Special Advertisement Control as part of the planned work to be undertaken on this proposal within the time slot which is to be identified in the Management Strategy, ensuring their inclusion can be justified in accordance with national criteria for selection so that the additional controls imposed will be effective and enforceable and supported by the community, their owners and the Secretary of State;

- **Proposal 9 Areas for Improvement/Enhancement**

Add the areas put forward by key groups, as identified in **Appendix 3** of this report, to those to be considered for the preparation of a development brief for improvement/enhancement as part of the planned work to be undertaken on this proposal within the time slot which is to be identified in the Management Strategy, involving consultation with the community and owners.

- 10.9 Finally it needs to be recognised that since the appraisal (with interim draft proposals) was adopted and published in 2006 that a number of initiatives have taken place in the conservation area, including: a local audit of street surfaces and signage; works to enhance the street scene in Welsh Row; work to enhance the riverside area near Waterlode and work involving the Council's archaeology officers in relation to the "salt ships" excavated from Second Wood Street, the Roman wooden brine cisterns excavated from the Kingsley Fields site as well as their ongoing work which is funded by English Heritage involving monitoring water levels in waterlogged archaeological deposits in the town: all of which need recording in the appraisal.
- 10.10 In addition the appraisal needs to record the existence of a number of new developments within the town relating to: the emergence of the Nantwich Local Area Partnership; work which is currently taking place on the preparation of a local plan for Cheshire East, including work on a Town Centre Strategy, and, changes in national legislation.

11.0 Appendices

Appendix 1 – Consultation Responses;

Appendix 2 – Potential Candidates For Consideration For Inclusion In The Council's List of Buildings of Local Importance;

Appendix 3 – Potential Candidates For Consideration For Inclusion As Areas In Need of Improvement/Enhancement;

Appendix 4 – The Steps Leading Up To The Adoption Of The Nantwich Conservation Area Character Appraisal And Review;

Map 1 – Nantwich Conservation Area (Existing Boundary, Extension Recommended in 2012, Extensions Recommended in 2006 and Indicative Areas Not Proposed For Inclusion).

12.0 Access to Information

The background papers relating to this report can be inspected by contacting the report writer:

Officer: Conservation Officer, Elizabeth Rodgers

Telephone: 01270 686742

Email: Elizabeth.rodgers@cheshireeast.gov.uk

CONSULTATION RESPONSES

PROPOSAL 1

That the boundary of the conservation area should remain as it is but be extended to include the now listed walls of the site of the former walled garden to the former Townsend House to the north of Welsh Row, and, Pall Mall and Grocotts Row, as shown in the initial draft proposals Map t, subject to further work with key groups in 2006 before being finalised within a Conservation Area Management Strategy.

Reasoning: To retain its basis following the known early historic boundary of the town and reinforce it by the continued inclusion of the open wedge of land bounded by market Street, Beam Street, North Crofts and East View, which formed part of the wider enhancement scheme for the area in this eastern end of Beam Street (which has now been completed) to guide the form and appearance of any development within this central area. Subject to further work with key groups before being finalised within a Conservation Area Management Strategy, based on guidance published by English heritage in February 2006 during the consultation period.

COMMENTS		OFFICER RESPONSE AND RECOMMENDATIONS
<u>Town Council</u> Appraisal's Proposal	Support the initial draft proposal in the appraisal to extend the existing boundary to include the site of the former walled garden to the north of Welsh Row, Pall Mall and Grocott's Row.	The support given to the current proposal is appreciated. <u>Their inclusion is recommended.</u> Once approved they will take immediate effect and officers will carry out formal procedures to place Notices in the press, amend the conservation area boundary, notify all property owners, register the extensions as a land charges and amend the G.I.S mapping system.

<u>Market Town Project</u> Appraisal's Proposal	Aware that Civic Society will be suggesting reasons for extending the conservation area beyond that proposed.	Officer responses on these are given below (areas 1-10).
<u>Civic Society</u> Appraisal's Proposal	Support the initial draft proposal in the appraisal to extend the existing boundary to include the listed boundary wall of the former walled garden to the rear of Welsh Row and its proposal to include Pall Mall and Grocott's Row.	<p>The support given to the current proposal is appreciated.</p> <p><u>Their inclusion is recommended.</u></p> <p>Once approved they will take immediate effect and officers will carry out formal procedures to place Notices in the press, amend the conservation area boundary, notify all property owners, register the extensions as a land charges and amend the G.I.S mapping system.</p>
<u>Civic Society</u> <u>Rear boundaries.</u>	Do not agree that the boundary of the conservation area should remain as it is, as consider that it does not follow the rear boundaries of the historic properties of the town.	<p>The boundary of the conservation area has been drawn to reflect the historic rear boundaries of properties within the historic core as shown on the 1851 Jas Fenna Map, the oldest map for the town, wherever possible, with existing rear property boundaries used in cases where the historic boundary is not clear on the ground or would pass through current property boundaries. In accordance with accepted best practise nationally.</p> <p><u>Recommended that officers include text within the appraisal to explain the basis of the boundary in this respect and should include a copy of the 1851 Jas Fenna Map, to assist and endeavour to carry out work where necessary to correct clear mapping inaccuracies which have been identified in the boundaries in recent years which have resulted form the use of computer based mapping of existing rear property boundaries.</u></p>

<p><u>Civic Society</u> <u>Further extensions:</u> (relevant areas are identified by numbers below and are indicated on Map 1 appended to this report)</p>	<p>Suggest the boundary should be extended to include large additional areas of Victorian and Edwardian development, in accordance with English Heritage advice (guidance on appraisals and management strategies August 2005).</p> <p>Suggest that the boundary should be extended to include the whole of the historic late eighteenth century town including the full extent of all rear plots.</p>	<p>The boundary of the conservation area has been drawn tightly to encompass only its historic core as shown on the 1851 Jas Fenna Map (as explained above) with the almshouses and mansions at the ends of the main roads into the town being the recognised historic boundary to this particular historic town. In addition English Heritage indicate that they support this current demarcation of the boundary for Nantwich conservation area.</p> <p>English Heritage and Nantwich Civic Society have both subsequently indicated that they would support this current demarcation, when advise of its basis.</p> <p><u>Recommended that officers include text within the appraisal to explain the basis of the boundary in this respect and should include a copy of the 1851 Jas Fenna Map, to assist.</u></p>
<p><u>Town Council</u> <u>Further extensions:</u></p>	<p>Do not support the Civic Society's suggestion for a significant extension of the conservation area, as this will bring into the area a number of new properties and properties of no particular architectural or historical interest yet will restrict the rights of owners of those premises to alter or refurbish them.</p>	<p>The support given to the current demarcation of the boundary is appreciated.</p> <p><u>Recommended that officers include text within the appraisal to explain the basis of the boundary in this respect and should include a copy of the 1851 Jas Fenna Map, to assist.</u></p>
<p>Map 1 <u>-area 1</u> Civic Society</p>	<p>Suggest that the boundary should be extended to include west end of Welsh Row up to and including the aqueduct.</p>	<p>These properties and the aqueduct lie beyond the Wilbraham's Almshouse which mark the historic linear boundary of the conservation area in the 1851 Jas Fenna Map.</p>

		<p>It is recognised that the construction of the aqueduct was important and that its appearance and its role in assisting to link the historic Chester Canal/Ellesmere Port with canals to the south, to form the current day Shropshire Union Canal is significant. Work is currently being undertaken by officers from Cheshire East and from Cheshire West and Chester Borough Councils and the Chester Heritage Canal Trust to potentially make this section of the canal part of a canal conservation area.</p> <p><u>Recommended that no extension should be made to Nantwich conservation area to include this area.</u></p> <p>Officers will include text within the appraisal to explain the basis of the boundary to Nantwich conservation area and should include copy of the 1851 Jas Fenna Map, to assist.</p> <p>Officers will include text within the appraisal to outline the work currently being undertaken to potentially make a section of the Shropshire Union Canal which runs through Nantwich and northwards into a canal conservation area to assist.</p>
Map 1 - <u>area 1</u> Town Council (additional comments)	Do not consider the boundary should be extended to include west end of Welsh Row up to and including the aqueduct, as it will bring into the area a number of new properties and properties of no particular architectural or historical interest, yet restrict owner's rights to alter or refurbish them.	<p>The support given to the current demarcation of the boundary is appreciated.</p> <p><u>Recommended that no extension should be made to Nantwich conservation area to include this area.</u></p>

Map 1 - <u>area 2</u> Civic Society	Suggest that the boundary should be extended to include Hillfield Place, Jubilee Terrace and north end of Wellington Road as far south as Parkfield Drive.	<p>These properties lie beyond the historic core of the conservation areas shown on the 1851 Jas Fenna Map.</p> <p><u>Recommended that no extension should be made to Nantwich conservation area to include this area.</u></p> <p>Officers will include in the appraisal text explaining the basis of the boundary in this respect and should include a copy of the 1851 Jas Fenna Map.</p>
Map 1 - <u>area 3</u> Civic Society	Suggest that the boundary should be extended to include the west end of Crewe Road.	<p>These properties lie beyond the historic core of the conservation area shown on the 1851 Jas Fenna Map.</p> <p><u>Recommended that no extension should be made to Nantwich conservation area to include this area.</u></p> <p>Officers will include in the appraisal text explaining the basis of the boundary in this respect and should include a copy of the 1851 Jas Fenna Map.</p>
Map 1 - <u>area 4</u> Civic Society	Suggest that the boundary should be extended to include the west end/much of London Road.	<p>These properties lie beyond site of the former Wright's Almshouses which mark the historic linear boundary of the conservation area shown on the 1851 Jas Fenna Map.</p> <p><u>Recommended that no extension should be made to Nantwich conservation area to include this area.</u></p> <p>Officers to include within the appraisal text explaining the basis of the boundary in this respect and should include a copy of the 1851 Jas Fenna Map.</p>

Map 1 - area 5a Civic Society	Suggest that the boundary should be extended to include the south end of Millstone Lane.	<p>This area lies beyond the historic core of the conservation area shown on the 1851 Jas Fenna Map.</p> <p><u>Recommended that no extension should be made to Nantwich conservation area to include this area.</u></p> <p>Officers to include within the appraisal text explaining the basis of the boundary in this respect and should include a copy of the 1851 Jas Fenna Map.</p>
Map 1 - area 5b Town Council (additional comments)	Suggest that the boundary should be extended to include the long row of terraced dwellings running along the westerly side of Millstone Lane from the Crewe Road end.	<p>This area lies beyond the historic core of the conservation area shown on the 1851 Jas Fenna Map.</p> <p><u>Recommended that no extension should be made to Nantwich conservation area to include this area.</u></p> <p>Officers to include within the appraisal text explaining the basis of the boundary in this respect and should include a copy of the 1851 Jas Fenna Map.</p>
Map 1 - area 6 Civic Society	Suggest that the boundary should be extended to include the Pratchitt's Row.	<p>This area lies beyond the historic core of the conservation area shown on the 1851 Jas Fenna Map.</p> <p>It is however identified as an important part of the Haighton's Clothing Factory in the detailed assessment of the town recently produced by Nantwich Civic Society and officer's proposed action to protect such buildings is set out below under Proposal 3.</p> <p><u>Recommended that no extension should be made to Nantwich conservation area to include this area.</u></p>

		Officers to include text within the appraisal to explain the basis of the boundary in this respect and a copy of the 1851 Jas Fenna Map, and, text to explain the proposed action to protect the building as set out below under Proposal 3.
Map 1 - <u>area 6</u> Town Council (additional comments)	Suggests that inclusion of important properties within a proposed Local List may be a more effective way of protecting them than a blanket extension of the conservation area boundary.	<p>The support given to the use of the Council's list of locally important buildings rather than an extension to the conservation area, as a more appropriate means of protecting important properties in certain cases, is noted.</p> <p><u>Recommended that no extension should be made to Nantwich conservation area to include this area.</u></p> <p>Officer's to include text within the appraisal to explain the proposed action to protect the building as set out below in Proposal 3.</p>
Map 1 - <u>area 7</u> Civic Society	Suggest that the boundary should be extended to include The Crescent and Park View.	<p>These properties lie beyond Crewe's Almshouses which mark the historic linear boundary of the conservation area shown on the 1851 Jas Fenna Map.</p> <p><u>Recommended that no extension should be made to Nantwich conservation area to include this area.</u></p> <p>Officers to include within the appraisal text explaining the basis of the boundary in this respect and should include a copy of the 1851 Jas Fenna Map.</p>
Map 1 - <u>area 8</u> Civic Society	Suggest that the boundary should be extended to include Wall Lane and south end of Manor Road.	<p>This area lay within the historic boundary shown on the 1851 Jas Fenna Map but was redeveloped in later years.</p> <p><u>Recommended that no extension should be made to</u></p>

<p>Map 1 - <u>area 9</u> Civic Society</p>	<p>Suggest that the boundary should be extended to include a greater extent of the Riverside Park.</p>	<p><u>Nantwich conservation area to include this area.</u></p> <p>The current boundary already protects the setting of the conservation area by including the visible section of the grassed riverside area of the River Weaver at Waterlode The areas beyond are not visible</p> <p><u>Recommended that no extension should be made to Nantwich conservation area to include this area.</u></p>
<p>Map 1 - <u>area 10</u> Civic Society</p>	<p>Suggest that the boundary should be extended to the south to include the whole of Pillory Street, Station Road and Waterlode.</p>	<p>The southern part of Pillory Street was occupied by Elms House/Maisterton's Hall in the 1851 Jas Fenna Map which marked the historic linear boundary of the town and information subsequently received confirms the remaining buildings here are their outbuildings. An extension to include this site would thus be appropriate.</p> <p>Station Road and Waterlode to the south should not be included as they lie beyond the former Elms House/ Maisterton's Hall which marked the historic linear boundary of the town on the 1851 Jas Fenna Map.</p> <p><u>Recommended that the conservation area boundary should be extended to include only the former Elms House/ Maisterton's Hall site on the west of Pillory St.</u></p> <p>Once approved it will take immediate effect and officers will carry out formal procedures to place Notices in the press, amend the conservation area boundary, notify all property owners, register the extensions as a land charges and amend the G.I.S mapping system.</p>

PROPOSAL 3

A local list should be created within the conservation area to include those few remaining buildings which were identified in the conservation area designation/amendment report produced by the County Council as being provisionally listed or meriting inclusion on the national register in 1973; the front section of the Methodist School Rooms on Hospital Street; the site of the old Biot by the River Weaver; the war memorial in the Market Square and the Wheelrights Chimney in Cocoa Yard, as shown in the initial draft proposals map (Map 7) and Appendix 4. Subject to further work with key groups in 2006 before being finalised within a Conservation Area Management Strategy.

Reasoning: To identify their recognised significance and ensure their local list status is taken into account in all future relevant development proposals. Subject to further work with key groups before being finalised within a Conservation Area Management Strategy, based on guidance published by English heritage in February 2006 during the consultation period.

2012 – It should be noted that this proposal will be amended, to identify the fact that it is not proposed to include these buildings in the local list but to identify them as buildings which make a positive contribution to the conservation area and identify the fact that their inclusion within an Article 4 Direction will be given priority in the timetable in the **Management Strategy**, following English Heritage guidance, to give them more rigorous protection than would be afforded by their inclusion within the local list

COMMENTS		OFFICER RECOMMENDATIONS
<u>Town Council</u> Appraisal's Proposal	Support the initial draft proposal in the appraisal to create a Local List but suggest that the Methodist School frontage of particular importance.	Support given to the current proposal relating to the school is appreciated but the comments regarding the frontage are not supported by other groups. The <u>frontage needs to remain</u> within Appendix 4 of the 2006 Appraisal & Review <u>as being an element which makes a positive contribution to the to the conservation area</u> , to ensure that its value is taken into account when considering any application to demolish, alter or extend it, and, identify its <u>inclusion within an Article 4 Direction be given priority in the timetable within the Management Strategy</u> . To seek to give it more rigorous protection than would be afforded by its inclusion within a local list.

		In accordance with English Heritage guidance.
<u>Market Town Project Appraisal's Proposal</u>	Support the preparation of a Local List, suggest widening the list outside the conservation area boundary and updating the statutory list.	<p>Support given to the current proposal is appreciated and the comments regarding widening the local list will be dealt with in relation to the candidates identified by the Civic Society, as set out below.</p> <p>Work on the statutory list is the responsibility of <u>English Heritage</u> and they will be <u>sent a copy of the candidates identified by the Civic Society</u>, to assist in any future work they may be undertaking relating to Nantwich.</p>
<u>Civic Society Appraisal's Proposal</u>	Support the initial draft proposal in the appraisal to create a Local List, but suggest that the whole of the Methodist School should be included and that the statutory list needs updating.	Support given to the current proposal is appreciated but the comments relating to the <u>inclusion of all of the Methodist School is not supported</u> , given that these are later and altered elements.
Appendix 2 <u>Civic Society Additional Proposals</u>	Make a detailed submission which considers all the candidates, suggests others and provides supporting evidence base. (Appendix 2, summary for insertion in appraisal).	<p>Detailed assessment appreciated and the <u>buildings are included in Appendix 2 to this report</u>. They will not be put on the local list but <u>they and the buildings identified in Appendix 4 of the 2006 Appraisal will be identified as being buildings which make a positive contribution to the conservation area</u>, to ensure their value is taken into account when considering applications for their demolition, alteration or extension.</p> <p>Identify the fact that their <u>inclusion within an Article 4 Direction be given priority in the timetable within the Management Strategy</u>. To seek to give them more rigorous protection than would be afforded by their inclusion within a local list. In accordance with guidance produced by English Heritage.</p>

PROPOSAL 5

There would be scope to create an Article 4 (II) Direction Area in Nantwich conservation area targeted at front elevations of the traditional unlisted residential properties in the conservation area, as shown in the initial draft proposals map (Map 7). Subject to further work with key groups in 2006 before being finalised within a Conservation Area Management Strategy.

Reasoning: To seek to protect them from the use of both non traditional style and upvc for doors and windows which would affect the character and appearance of the main thoroughfares in the conservation area. Subject to further work with key groups before being finalised within a Conservation Area Management Strategy, based on guidance published by English heritage in February 2006 during the consultation period.

COMMENTS		OFFICER RECOMMENDATIONS
<u>Town Council</u> Appraisal's Proposal	Strongly support the initial draft proposal in the appraisal to create an Article 4 (ii) Direction Area to control the use of inappropriate material such as upvc windows.	The support given to the current proposal is appreciated.
<u>Market Town Project</u> Appraisal's Proposal	Support the initial draft proposal in the appraisal to create an Article 4 (ii) Direction Area.	The support given to the current proposal is appreciated.
<u>Civic Society</u> Appraisal's Proposal	Support the initial draft proposal in the appraisal to create an Article 4 (ii) Direction Area	The support given to the current proposal is appreciated.
<u>Civic Society</u> Additional Proposals	Suggest that the proposed area be extended to include both sides of South Crofts, together with Rigby's Row, East View, Pall Mall and Grocotts Row.	The suggested additional areas identified will be noted in the text of the appraisal and will be considered in accordance with national criteria for selection so the additional controls imposed will be effective and enforceable and supported by the community and their owners when planned work on the Article 4 (ii) Direction is undertaken within the time slot to be identified within the Management Strategy .

PROPOSAL 7

An application should be made to the Secretary of State to create an Area of Special Advertisement Control in the commercial and retail core of the conservation area, as shown in the initial draft proposals map (Map 7). Subject to further work with key groups in 2006 before being finalised within a Conservation Area Management Strategy.

Reasoning: To protect the sensitive commercial core of the conservation area from a loss of amenity which would affect its special character. Subject to further work with key groups before being finalised within a Conservation Area Management Strategy, based on guidance published by English heritage in February 2006 during the consultation period.

COMMENTS		OFFICER RECOMMENDATIONS
<u>Town Council</u> Appraisal's Proposal	Strongly support initial draft proposal in the appraisal to create an Area of Special Advertisement Control.	The support given to the current proposal is appreciated.
<u>Town Council</u> Additional Proposals	Suggests the need for a coherent and effective policy for shopfronts and signs, its effective application and enforcement.	This will be facilitated by the proposed Area of Special Advertisement Control and by the production of the planned guidance note in Proposal 6 of the appraisal.
<u>Market Town Project</u> Appraisal's Proposal	Support the initial draft proposal in the appraisal to create an Area of Special Advertisement Control.	The support given to the current proposal is appreciated.
<u>Civic Society</u> Appraisal's Proposal	Strongly support initial draft proposal in the appraisal to create an Area of Special Advertisement Control.	The support given to the current proposal is appreciated.
<u>Civic Society</u> Additional Proposals	Suggest the proposed area be extended to include Pepper Street and Mill Street (from High Street to Bowers Row).	The suggested additional areas will need to be noted in the text of the appraisal and their inclusion considered to ensure it can be justified in accordance with national criteria for selection so that the additional controls imposed will be effective and enforceable and supported by the community, their owners and the Secretary of State the when planned work on the Area of Special Advertisement Control is undertaken within the time slot to be identified within the Management Strategy .

PROPOSAL 9

Development briefs should be prepared for any sites within or adjacent to the conservation area which are subsequently allocated for development in any future local plan or are in need of improvement, including potential sites identified on the initial draft proposals map (Map 7) and appropriate nominees received during the consultation period on this appraisal in January / February 2006. Subject to further work with key groups in 2006 before being finalised within a Conservation Area Management Strategy.

Reasoning: To ensure a continued improvement in the design and appearance of such schemes. Subject to further work with key groups before being finalised within a Conservation Area Management Strategy, based on guidance published by English heritage in February 2006 during the consultation period.

COMMENTS		OFFICER RECOMMENDATIONS
<u>Town Council</u> Appraisal's Proposal	Support the initial draft proposal in the appraisal for the need to prepare development briefs for sites in or adjacent to the conservation area allocated for development or in need of improvement, including potential sites identified in the initial draft proposals Map 7 and appropriate nominees received during the consultation process.	The support given to the current proposal is appreciated.
<u>Town Council</u> Additional Proposal	Suggest that briefs should be detailed and specific and steps taken to ensure they are closely followed by developers.	Comments on the need for the briefs to be detailed, specific and closely followed are appreciated and could be included in the text of the appraisal.
<u>Market Town Project</u> Appraisal's Proposal	Support the initial draft proposal in the appraisal for the need to prepare development briefs for sites in or adjacent to the conservation area allocated for development or in need of improvement, including potential sites identified in the initial draft proposals Map 7 and appropriate nominees received during the consultation process.	The support given to the current proposal is appreciated.

<p>Appendix 3 <u>Market Town Project</u> Additional Proposal</p>	<p>Suggests that briefs need to be based on planning, ecology and landscape context, with character assessments, visual interpretation and cross sections where necessary to illustrate building massing, open space and connections, topography and how views and distinctive character or features are retained or treated.</p> <p>Suggest that briefs for allocated development sites and briefs for areas in need of improvement need to be identified separately or an annotation applied to the map, to avoid the areas in need of improvement being mistaken for development sites.</p> <p>Make a detailed submission which suggests other areas in need of improvement. (Appendix 3, summary for insertion in appraisal).</p>	<p>Comments on the need for the briefs to be based on the planning and ecology/landscape context and the need for visual interpretation are appreciated and could be included in the text of the appraisal.</p> <p>The suggestion that clarity is needed to differentiate between the two types of sites in the proposal, in order to protect the areas in need of improvement from being potentially mistaken for development sites is fully appreciated. And the text of the proposal and annotation on the map could be amended accordingly.</p> <p>The suggestion for the inclusion of other areas in need of improvement will be noted in the text of the appraisal and assessed for inclusion when planned work on this proposal is undertaken within the time slot to be identified in the Management Strategy, involving consultation with the community and owners.</p>
---	--	--

APPENDIX 2

POTENTIAL CANDIDATES FOR CONSIDERATION FOR INCLUSION IN THE COUNCIL'S LIST OF BUILDINGS OF LOCAL IMPORTANCE

Railway Station Building, off Wellington Road;
 Railway Hotel and associated outbuildings, Wellington Road;
 Nantwich Museum, Pillory Street;
 Cocoa House, 2 Pillory Street;
 Chimney to Wheelright's Forge, Cocoa Yard;
 Players Theatre, Pillory Street/Love Lane;
 Church House, Church Walk;
 WHS, High Street/Church Walk;
 War Memorial, Churchyardside;
 Market Hall, Churchyardside/Market Street;
 Ye Old Wyche Theatre, Market Street;
 31-33 High Street and 31a High Street;
 5 Churchyardside;
 Conservative Club, Churchyardside;
 Methodist Church Centre, Hospital Street;
 Methodist School Rooms, Market Street;
 39 Beam Street;
 The Gables, 55 Beam Street;
 25-33 Pratchett's Row;
 1-23 Pratchett's Row;
 33-47 Pillory Street;
 The Cobblers, Pall Mall;
 Manor House 7, 7a and 7b Beam Street;
 6-10a Welsh row;
 Dabber's Cottage, 74 Welsh Row;
 88-92 Welsh Row;
 Former Police Station, Welsh row;
 The Grammar School/Malbank High School/Sixth Form College, /welsh Row;
 War Memeorial at former Grammar School, Welsh Row;
 Watermill, opposite Mill Street, Waterlode;
 Poor Law Institution and Hospital, Barony Road/Princes Court, off Cobbs Lane;
 Crash Site/Grave, Lieutenant Brown, Riverside Park off Shrewbridge Road.

Source: Submission by Nantwich Civic Society

This page is intentionally left blank

APPENDIX 3

**POTENTIAL CANDIDATES FOR CONSIDERATION FOR INCLUSION AS
AREAS IN NEED OF IMPROVEMENT/ENHANCEMENT**

Site adjacent to Market Hall;
Boundary of Waterlode Car Park;
Upper Weaver Valley Project;
Nantwich Aqueduct and Western Gateway;
New Kingsley Fields Road;
Crowsfoot Community Centre and Recycling Centre;
Nantwich Station;
Former Walled Garden (Welsh Row);
Hospital Street Sitting Area;
Pillory Street and Hospital Street (lower end).

This page is intentionally left blank

APPENDIX 4

THE STEPS LEADING UP TO THE ADOPTION OF THE NANTWICH CONSERVATION AREA CHARACTER APPRAISAL AND REVIEW.

Designation of Nantwich Conservation Area

- Nantwich Conservation Area was designated on 4th December 1969 and its boundary was amended on 7th December 1973.

Draft Nantwich Conservation Area Character Appraisal & Review

- The Draft Nantwich conservation Area Character Appraisal and Review was prepared by officers and approved for public consultation on 25th November 2005, incorporating a number of amendments approved by Councillors a Conservation Area Sub Committee Evaluation Team (CASCET) appointed by the Development Control Committee of the former Crewe & Nantwich Borough council.

Public Consultation on the Draft character Appraisal & Review

- The Draft Nantwich Conservation Area Character Appraisal & Review went to public consultation over a six week period between 16th January and 24th February 2006.
- It formed the basis of public consultation with residents and businesses, and, with the Town Council, Nantwich Civic Society, the Nantwich Market Town Project, the Town Centre Manager and Business Community Representative and the County Council and fellow Borough Council officers who were sent a copy of the document.
- Consultation Publicity included the distribution of leaflets to properties in the Conservation Area and areas proposed for extensions, deposit of draft appraisal at libraries in Nantwich and Crewe and Council Offices in Nantwich and Crewe and on the Council's website.

Consultation responses on the Draft character Appraisal & Review

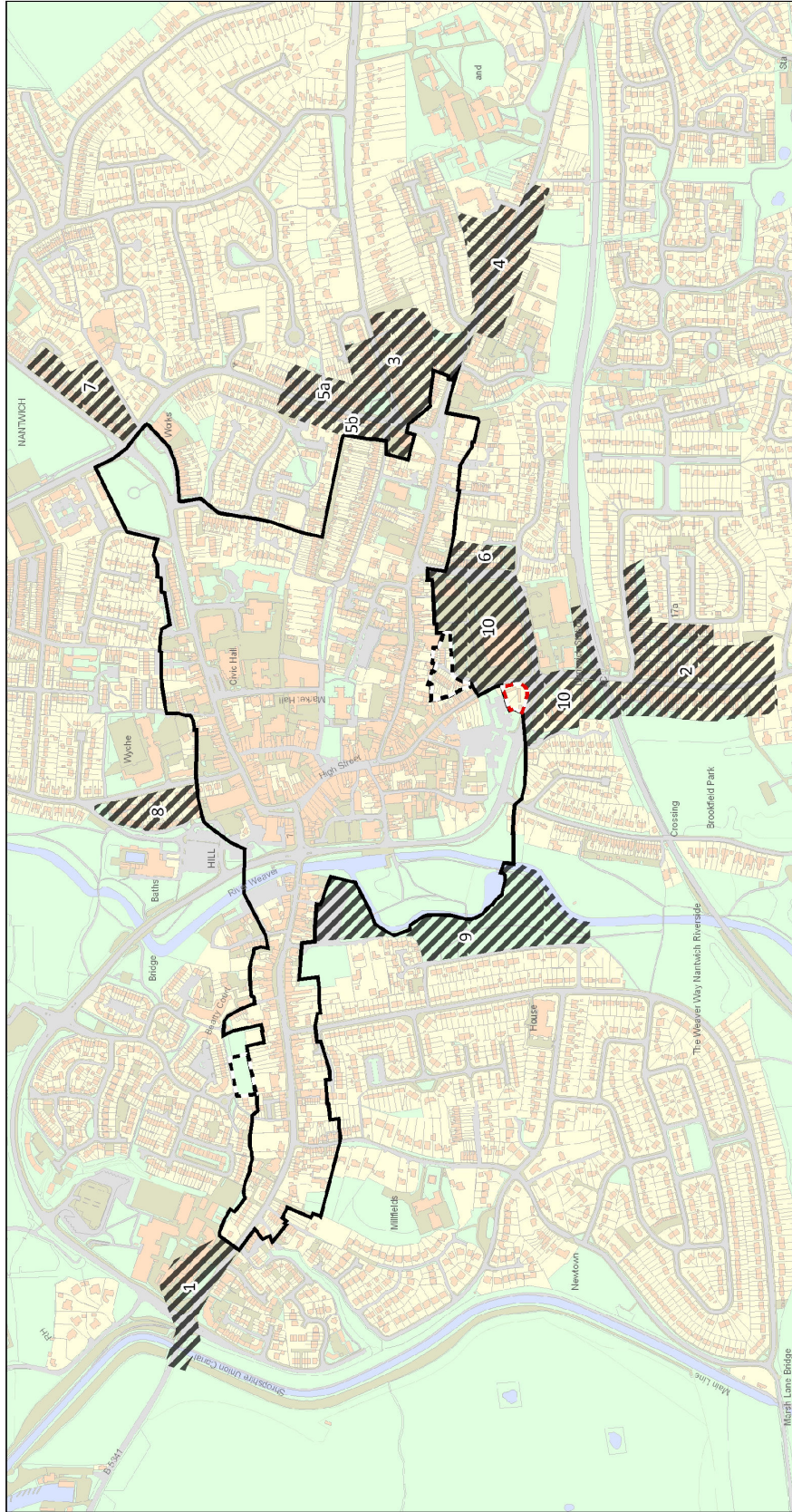
- Consultation responses subsequently received on the draft document indicated that there was overall agreement with its content and with its thirteen proposals.

Adoption of the Character Appraisal & Review

- A report on the consultation responses received was considered by CASCET on 6th April 2006. They resolved to approve the document, subject to its amendment to incorporate factual corrections & updates identified during the consultation period, and the identification of five of its proposals as 'initial draft proposals (Proposal 1 conservation area boundary, Proposal 3 an article 4 (ii) direction area, Proposal 5 a local list, Proposal 7 an area of special advertisement control and Proposal 9 development briefs for areas for improvement or enhancement.

- It was adopted on this basis in order to enable further work with three of the key groups (Nantwich Town Council; Nantwich Civic Society; Nantwich Now Market Town Project), prior to their subsequent finalisation in an integral Management Strategy (in accordance with the latest guidance produced by English heritage during the consultation period in 2006) .
- This recommendation was approved by the Council's Development Control Committee on 2nd May 2006.
- The document was subsequently amended to incorporate the factual corrections and updates identified during the consultation period and the identification of these five proposals as 'initial draft proposals' and the three key groups were then sent copies of the amended document and invited to submit their final detailed comments on these five proposals.

Map 1



Nantwich Conservation Area

- Existing Conservation Area boundary
- Extension recommended in 2012
- Extensions proposed in 2006
- Indicative areas not proposed for inclusion (numbers relate to areas identified in committee report)



This page is intentionally left blank